

# ***Hustler Z CE Parts Manual***

**HUSTLER®**

•••••

***Hustler Turf Equipment***

••••

*P.O. Box 7000*

•••

*Hesston, Kansas*

•

*67062-2097*



---

# Table of Contents

## Chapter 1

General Information .....	1-1
---------------------------	-----

## Chapter 2 Contents

Rivet Nut Installation .....	2-2
Footrest Assembly .....	2-3

## Chapter 3 Contents

Hydraulic System Installation .....	3-2
-------------------------------------	-----

## Chapter 4 Contents

Battery Installation .....	4-2
Deck Lift Assembly .....	4-4
Steering and Park Brake Assembly .....	4-6
Pump Belt and Pulleys Installation .....	4-10

## Chapter 5 Contents

Kawasaki Engine Installation .....	5-2
Fuel System Installation .....	5-6
Fuel System Installation .....	5-8
Instrument Panel Assembly .....	5-10
Electrical Schematic (783894) .....	5-12

## Chapter 6 Contents

Front Wheel Assembly .....	6-2
Front Wheel Breakdown—747782 .....	6-4
Option Semi-Pneumatic Tire/Wheel—789537 .....	6-5
Drive Wheel Assembly Installation .....	6-6
Anti-Rollover Wheel Assembly .....	6-7

## Chapter 7 Contents

52" Deck Assembly .....	7-2
52" Deck Pulley Assembly .....	7-4
Spindle Assembly - 350595K .....	7-7
Spindle Assembly - 796235 .....	7-8

## Chapter 8 Contents

Deck Installation .....	8-2
Deck Belt Routing and Tensioning .....	8-4
Seat Installation .....	8-6

## Chapter 9 Contents

Tractor Decals .....	9-2
52" Deck Decals .....	9-4

## Chapter 10 Contents

Mulch Kit—344929 .....	10-2
Mulch Kit—352435 .....	10-3

Index .....	i-1
-------------	-----





# Chapter 1

## **General Information**

This Manual covers Hustler Z models **926881CE 23/52**.

---

## **Frequently Ordered Parts**

<b>PART NO.</b>	<b>DESCRIPTION</b>
027912	LUBRIZOL 7 OZ. BOTTLE
027920	LUBRIZOL 10 OZ. BOTTLE
768341	HYDRAULIC OIL FILTER
781443	PUMP DRIVE BELT
782292	B-SECTION BELT, 52" DECK
068478	FUEL FILTER
785261	MAIN AIR FILTER ELEMENT
785279	SAFETY AIR FILTER ELEMENT
772079	KAWASAKI ENGINE OIL FILTER
781898	18" CW BLADE FOR SADDLESS

---

## **Service Literature**

<b>PART NO.</b>	<b>DESCRIPTION</b>
375527	HUSTLER Z OWNER'S MANUAL
778423	KAWASAKI 19/23HP OWNERS MANUAL

---

*Note: When ordering parts, you must use the part number as shown for each part, not the index number. Always give the model and serial number to your parts and service representative.*

*Note: Items sold in bulk such as seals and hoses are sold by the foot.*

---

## **Using this manual**

Illustrations used were current at the time of printing, but subsequent production changes may cause your machine to vary slightly in detail. Excel Industries, Inc. reserves the right to redesign and change the machine as deemed necessary, without notification. If a change has been made to your machine which is not reflected in this parts manual, see your Hustler dealer for current information and parts.

## **Hardware Description Codes & Abbreviations**

The following codes are used throughout this parts manual. Refer to this list when ordering parts.

<b>ABBREVIATION</b>	<b>DESCRIPTION</b>
CB	CARRIAGE BOLT
CE	CLEVIS PIN
CP	COTTER PIN
CS	CAP SCREW
CW	CUP WASHER
FDRW	FENDER WASHER
FW	FLAT WASHER
HX	HEX HEAD
LW	LOCK WASHER
MB	MACHINE BUSHING
MS	MACHINE SCREW
NT	NUT
SC	SELF TAPPING CAP SCREW
SH	SOCKET HEAD
SB	SHOULDER BOLT
SS	SET SCREW

---

## **Standard Torques**

The following chart lists the standard torque values for the threaded fasteners found in this manual. Torque all cap screws, nuts and set screws to these values unless a different torque is shown in the Notes section next to the fastener

<b>SIZE</b>	<b>FT-LBS</b>	<b>NM</b>	<b>SIZE</b>	<b>FT-LBS</b>	<b>NM</b>
.250	8.2	11.1	M3	1	1.3
.312	17	23	M4	2.2	3
.375	30	40	M5	4.5	6.1
.438	48	65	M6	7.7	10.4
.500	73	99	M8	18.5	25
.562	105	143	M10	37	50
.625	145	200	M12	64	87
.750	260	350	M16	160	215
.875	420	565	M20	320	435
1.00	625	850	M24	555	750

---

### **NOTE:**

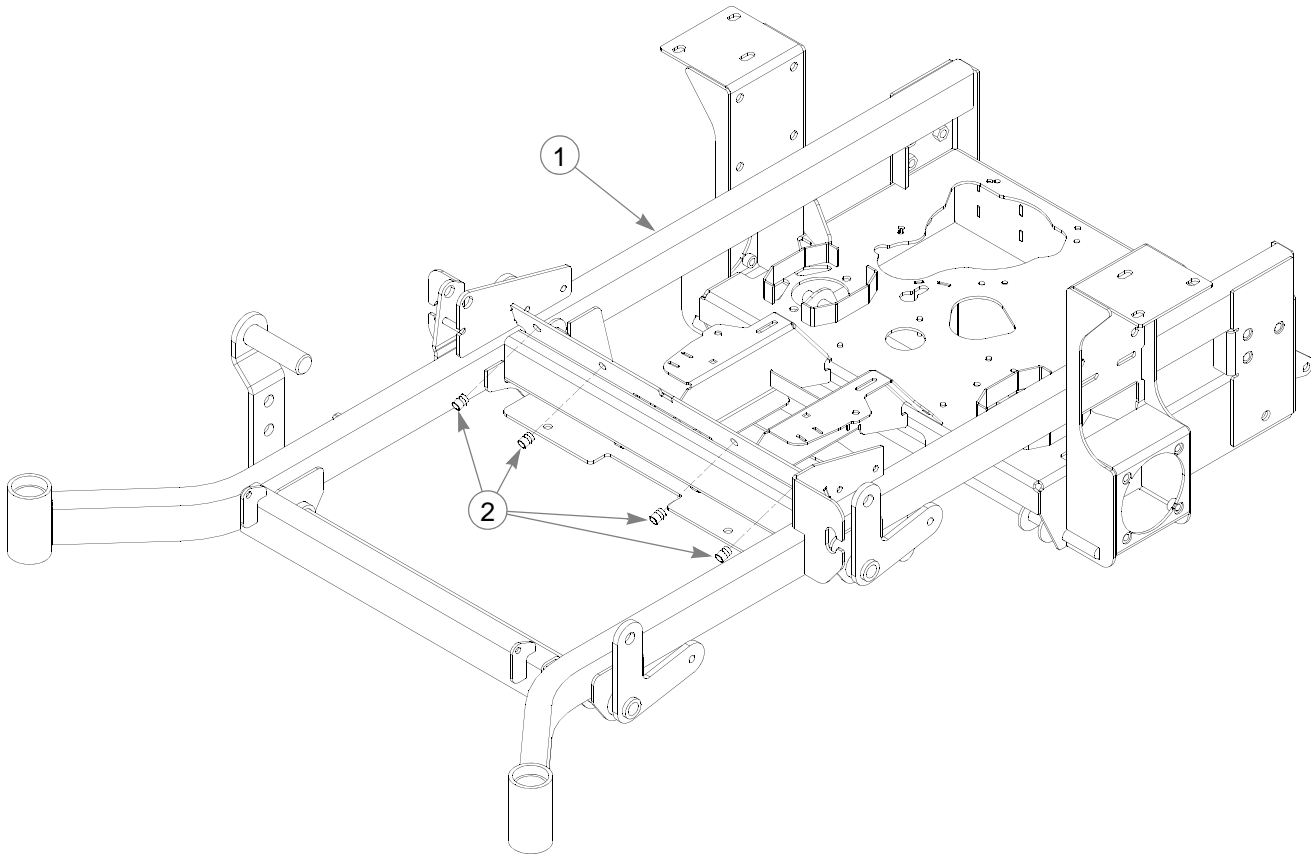
**Loctite 592 to be used on all pipe threads.  
Lubricate all grease zerks.**

---

## Chapter 2 Contents

Rivet Nut Installation .....	2-2
Foot Rest Assembly .....	2-3

# Rivet Nut Installation



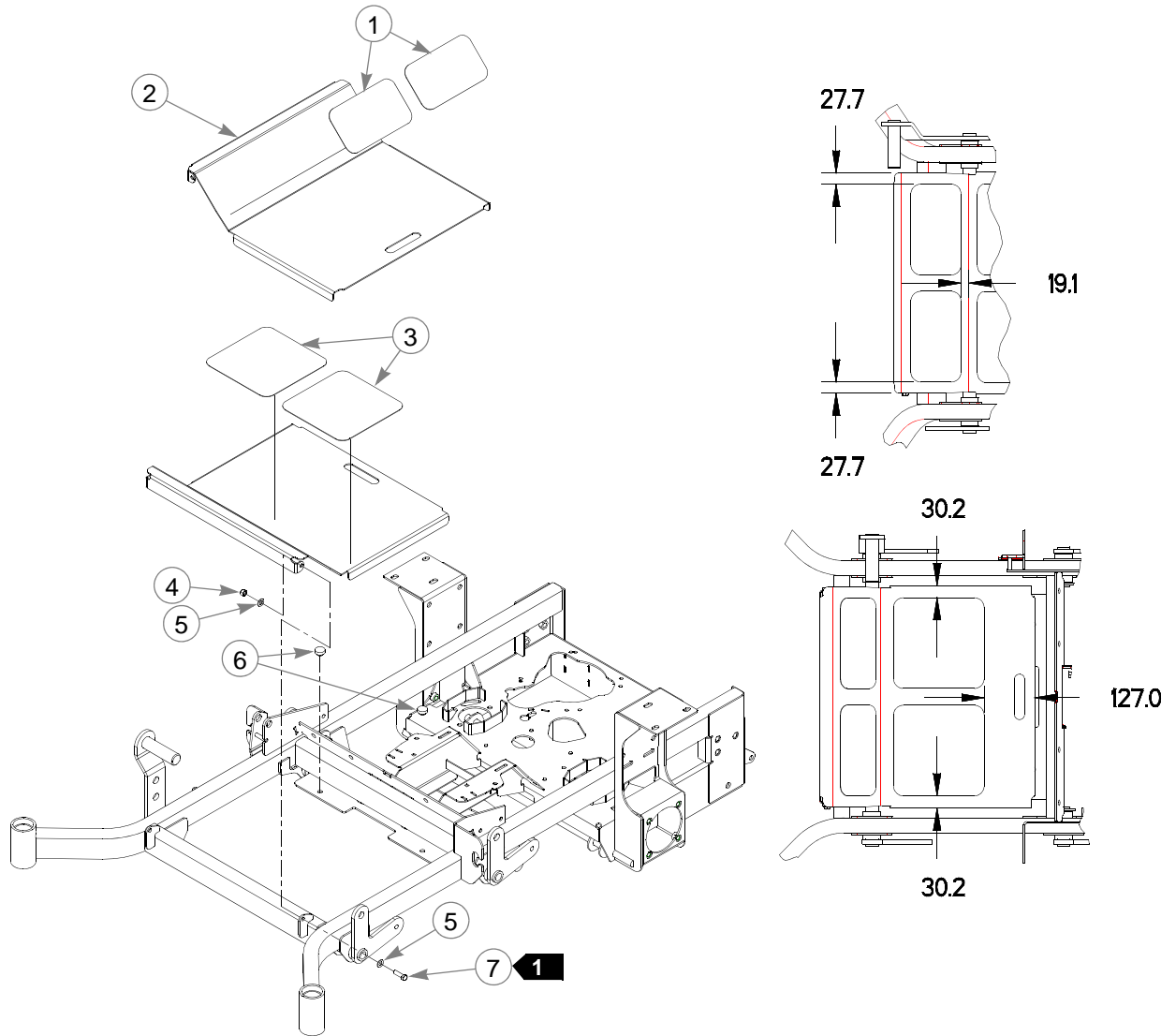
---

INDEX NO.	SERVICE PART NO.	MFG. PART NO.	QTY	DESCRIPTION
1	545350	347534	1	TRACTOR FRAME (52")
2	N/A	808493	4	3/8-16 THREAD RIVET NUT

---

## NOTES:

# Footrest Assembly



INDEX NO.	SERVICE PART NO.	MFG. PART NO.	QTY	DESCRIPTION
1	359547	359547	2	STEP TREAD
<b>2</b>	348276	348276	1	FLOOR
<b>3</b>	395533	395533	1	FLOOR
3	305615	305615	2	PLATFORM STEP TREAD
4	086660	086660	2	NT .375-16 HX LK NY
5	767954	767954	4	FW .406 X .812 X .060 SAE HD ZN
6	781880	781880	2	RUBBER BUMPER
7	052860	052860	2	CS .375-16 X 1.250 HX G5 ZN

## NOTES:

1. Do not tighten, Item 2 (395533 Floor) must be able to pivot on these bolts.
2. Used on mowers with serial number prior to 03082000.
3. Used on mowers with serial number 03082000 and higher.

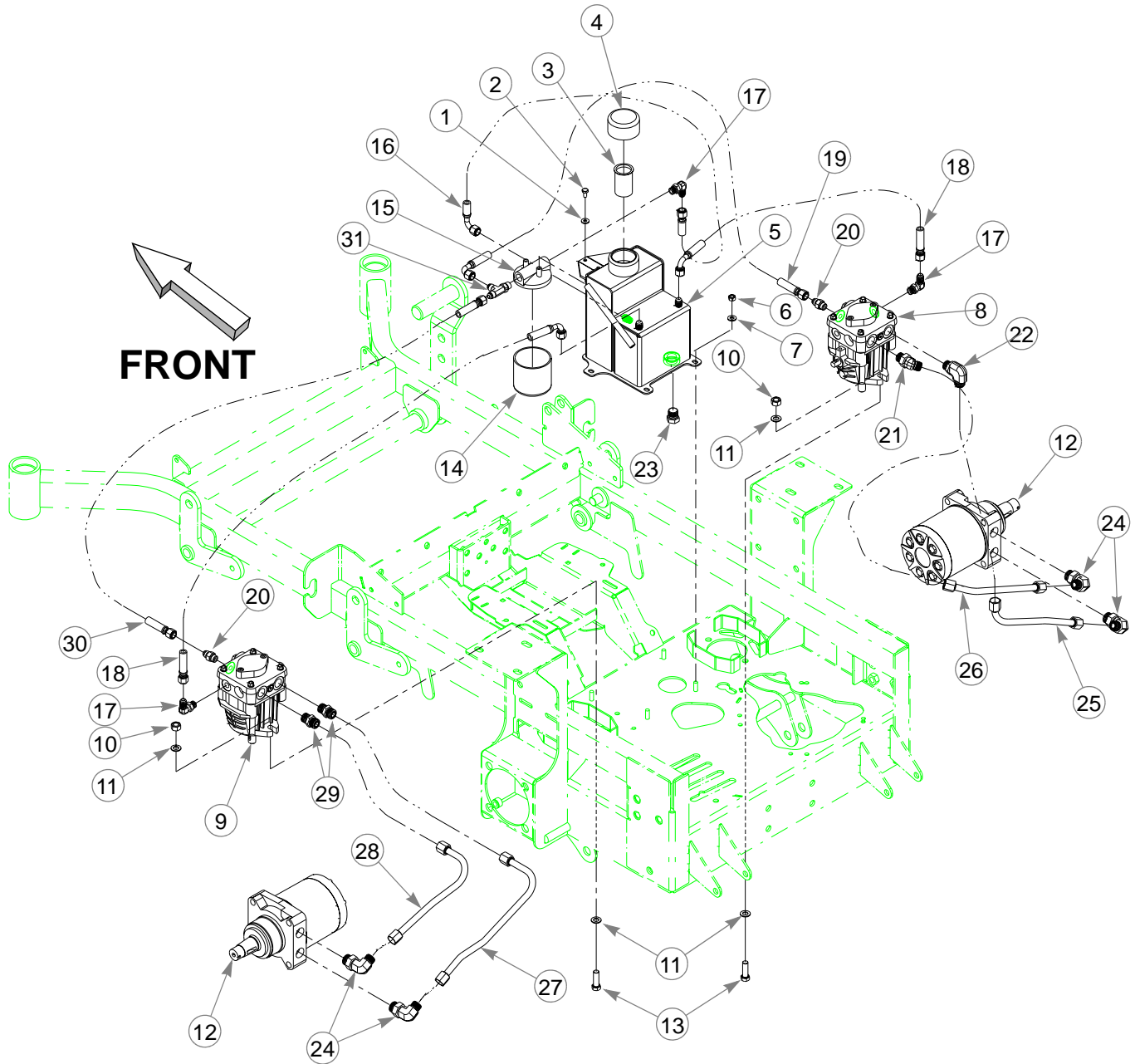


---

## Chapter 3 Contents

Hydraulic System Installation. . . . . 3-2

# Hydraulic System Installation





# Hydraulic System Installation

ITEM NO.	SERVICE PART NO.	MFG. PART NO.	QTY	DESCRIPTION
1	768515	768515	2	FW .281 X .625 X .051/.080 HD ZN/YL
2	055947	055947	2	CS .250-20 X .500 HX G5 ZN
3	032771	032771	1	STRAINER
4	032763	032763	1	BREATHER CAP
5	349860	349860	1	RESERVOIR
6	034272	034272	4	NT .312-18 HX G5 ZN
7	768523	768523	4	FW .343 X .687 X .051/.080 HD ZN/YL
8	781062	781062	1	HYDRO-GEAR PUMP, BDP-10A-300
9	781047	781047	1	HYDRO-GEAR PUMP BDP-10A-400
10	041707	041707	4	NT .437-14 HX G5 ZN
11	704742	704742	8	FW .453 X .812 X .060 ZN
12	781054	781054	2	ROSS/PARKER WHEEL MOTOR, MB-15
13	705186	705186	4	CS .437-14 X 1.375 HX G5 ZN
14	768341	768341	1	FILTER ELEMENT
15	768333	768333	1	FILTER HEAD
16	781575	N/A	1	-6STR -6 90°, PUSHLOC HOSE 4.75"
17	763946	N/A	3	90°, -6 O-RING/-6 JIC FITTING
18	778985	N/A	2	-6STR -6 90°, PUSHLOC HOSE, 13.00"
19	781591	N/A	1	-6STR -6 90°, PUSHLOC HOSE, 15.00"
20	779132	N/A	2	STR-6MORB/-6JIC FITTING
21	781559	N/A	1	45°, -8MORB/-8MSL FITTING
22	781542	N/A	1	90°, -8MORB/-8MSL FITTING
23	781658	N/A	1	STR-8-MORB/HEX PLUG
24	781526	N/A	4	90°, -10MORB/-8MSL FITTING
25	781500	N/A	1	RIGHT LOOP/RP-BM HYDRO TUBE
26	781492	N/A	1	RIGHT LOOP/LP-TM HYDRO TUBE
27	781484	N/A	1	LEFT LOOP/RP-BM HYDRO TUBE
28	781476	N/A	1	LEFT LOOP/LP-TM HYDRO TUBE
29	781534	N/A	2	STR-8MORB/-8MSL FITTING
30	781518	N/A	1	-6STR -6STR PUSHLOC HOSE, 9.00"
31	763953	N/A	1	-6 O-RING/-6JIC/6JIC T FITTING
	N/A	781469	1	MMZ HYDRAULIC KIT (INCLUDES 16-31)

## NOTES:

1. Add 103.5mL Lubrizol® (027912) to new system or when hydraulic oil is changed (see Owner's Manual).
2. Hydraulic system capacity is 4.732 L. Fill reservoir to within 25.4 mm of top of Item 3 (032771 Strainer)

---

## HYDRAULIC SYSTEM CHARGING PROCEDURE

1. Set handles in the neutral position.
2. Start engine at idle.
3. Let run for a minimum of 30 seconds.
4. Stroke handles to forward position.
5. If motors do not turn in 15 seconds return handles to neutral and repeat step 3 and 4 (one time).
6. If motors do not turn after second attempt, shut off the engine and check for oil at the pump.
7. Increase throttle to half speed and work handles through forward and reverse position until the motor operates smoothly throughout the entire speed range.

**Note:**

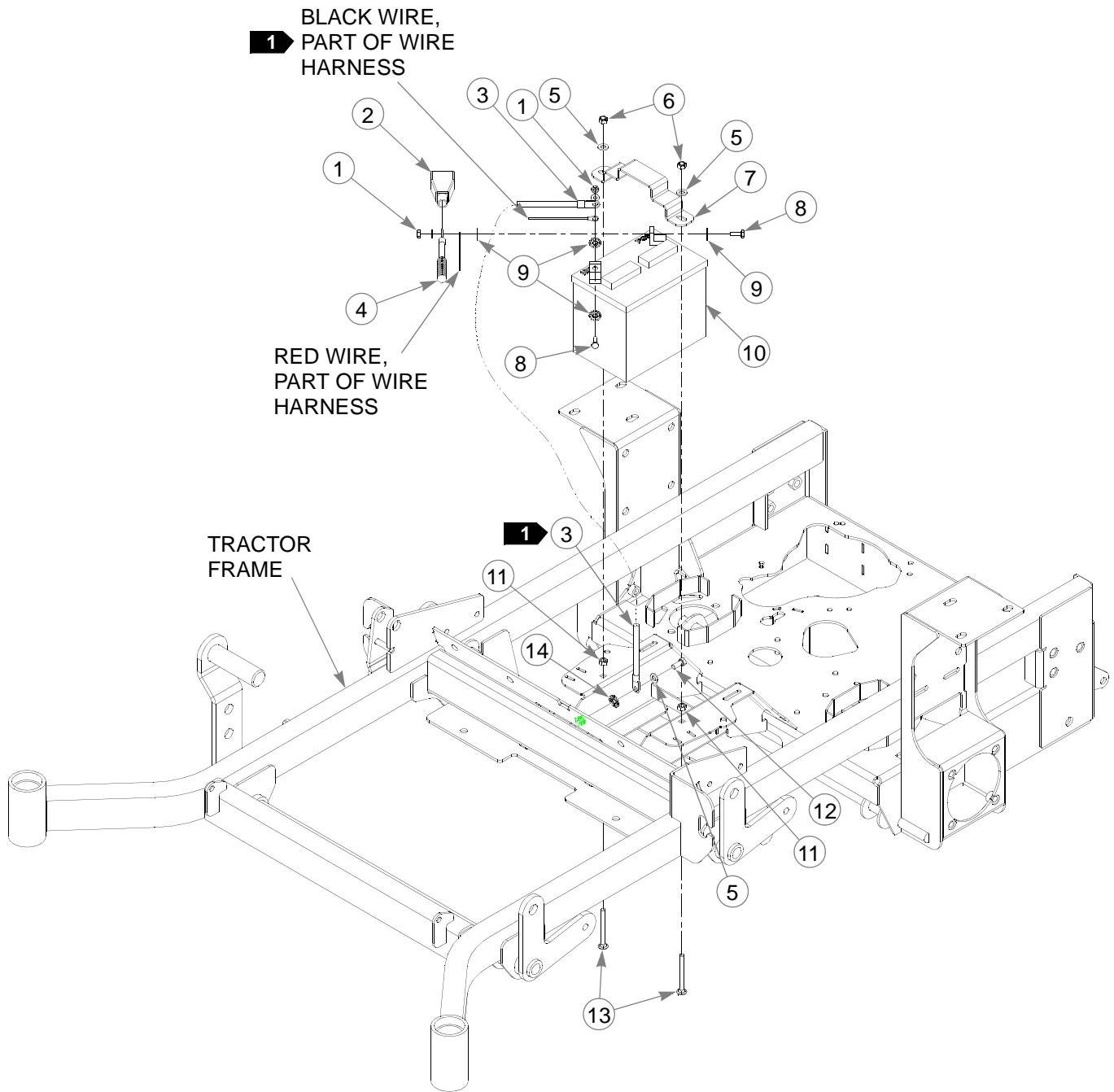
Seal Kit for hydraulic pump; 727756 (BDP10 Overhaul Seal Kit)

---

## Chapter 4 Contents

Battery Installation . . . . .	4-2
Deck Lift Assembly . . . . .	4-4
Steering and Brake Assembly . . . . .	4-6
Pump Belt and Pulley Installation . . . . .	4-10

# Battery Installation



---

## **Battery Installation**

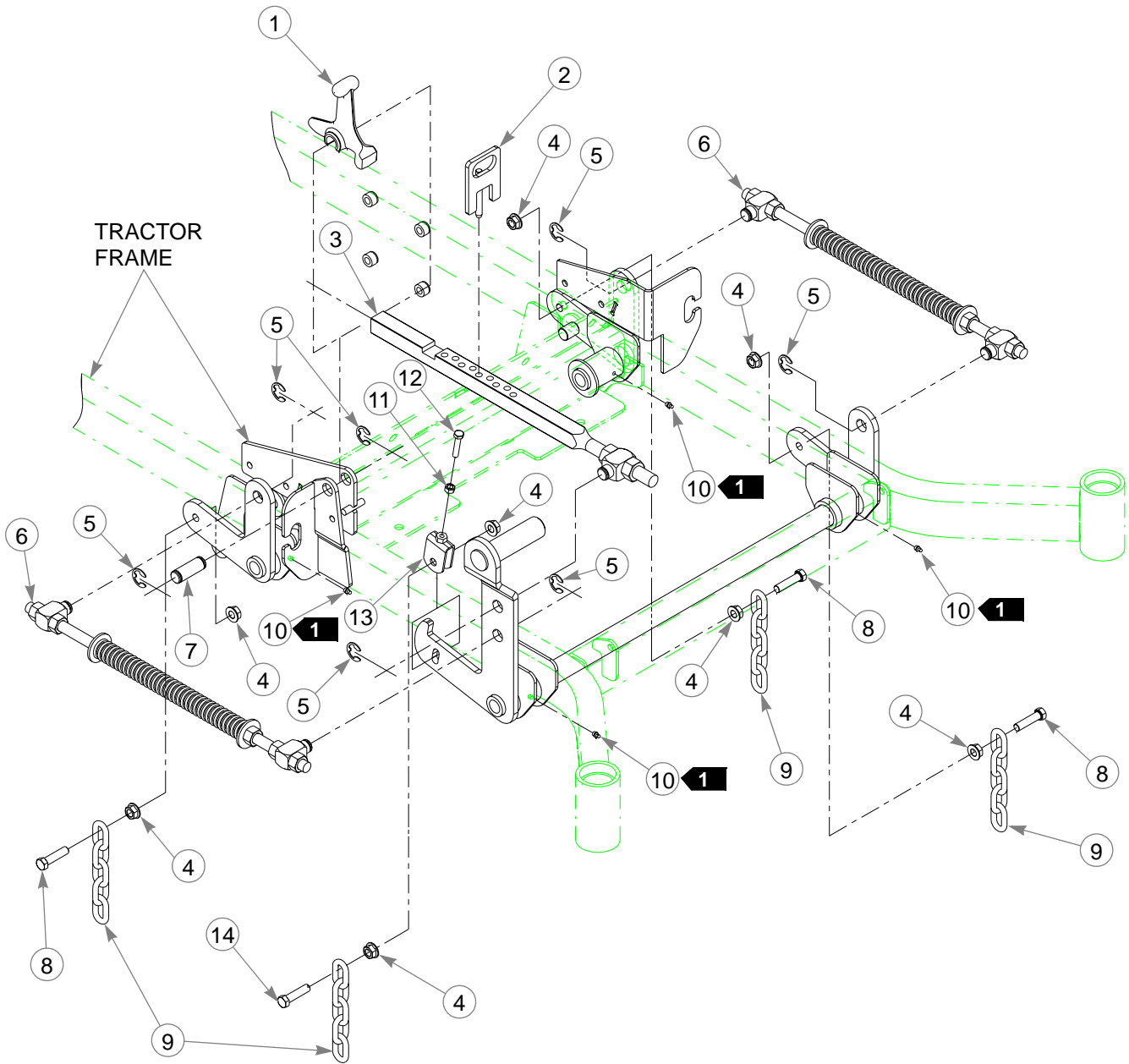
INDEX NO.	SERVICE PART NO.	MFG. PART NO.	QTY	DESCRIPTION
1	024927	024927	2	NT .250-20 HX GR.5 ZN
2	771428	771428	1	RED BATTERY CABLE BOOT
3	768820	768820	1	BATTERY GROUND CABLE
4	744276	744276	1	POSITIVE BATTERY CABLE
5	768523	768523	3	FW .343 X .687 X .051/.080 HD ZN/YL
6	058776	058776	2	NT .312-18 HX NL ZN
7	348417	348417	1	BATTERY CLAMP STRAP
8	055939	055939	2	CS .250-20 X .750 HX G5 ZN
9	029868	029868	4	LW .250 INT-EXT TOOTH ZN
10	740696	740696	1	BATTERY
11	034272	034272	2	NT .312-18 HX G5 ZN
12	034280	034280	1	CS .312-18 X .750 HX G5 ZN
13	779850	779850	2	CB .312-18 X 3.00 FUL ZN
14	029876	029876	1	LW .312 INT-EXT TOOTH ZN

---

### **NOTES:**

1. When performing service on mower, disconnect battery ground cable and black wire of harness and do not reconnect to battery until engine is ready to be started. See Owners Manual.

# Deck Lift Assembly



---

## **Deck Lift Assembly**

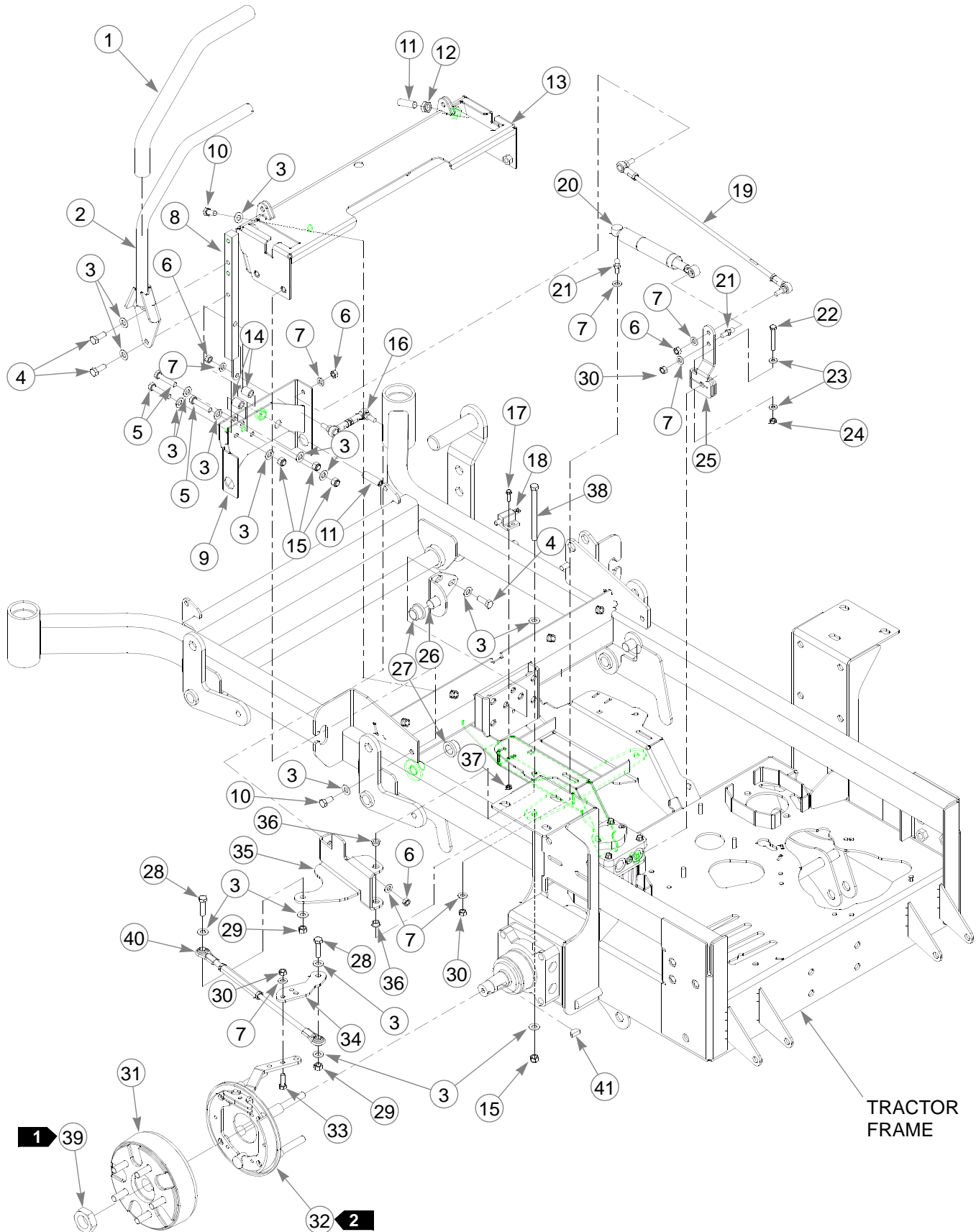
<b>ITEM NO.</b>	<b>SERVICE PART NO.</b>	<b>MFG. PART NO.</b>	<b>QTY</b>	<b>DESCRIPTION</b>
1	348318	348318	1	STOP HANDLE
2	348284	348284	1	HEIGHT ADJ STOP
3	783001	783001	1	DECK LIFT INDICATOR SUBASSEMBLY
4	704643	704643	8	NT .437-14 HX FLG ZN
5	781294	781294	7	CLIP E, 1.00 X .625 X .050
6	782995	782995	2	DECK LIFT SPRING SUBASSEMBLY
7	781229	781229	1	CE .750 X 2.25 X 1.75 HEADLESS
8	055749	055749	3	CS .437-14 X 1.750 HX G5 ZN
9	348391	348391	4	DECK LIFT CHAIN
10	015495	015495	4	STRAIGHT GREASE FITTING
11	034272	034272	1	NT .312-18 HX G5 ZN
12	756270	756270	1	CS .312-18 X 1.50 FUL THR GR5 ZN
13	348458	348458	1	DECK LEVELER YOKE
14	781831	781831	1	CS .437-14 X 1.750 FUL THD G5 ZN

---

### **NOTES:**

1. Apply grease to zerks (see owner's manual).

# Steering and Park Brake Assembly





# Steering and Park Brake Assembly

ITEM NO.	SERVICE PART NO.	MFG. PART NO.	QTY	DESCRIPTION
1	781260	781260	2	STEERING BAR GRIP
2	348755	348755	2	STEERING BAR
3	767954	767954	48	FW .406 X .812 X .060 SAE HD ZN
4	036244	036244	10	CS .375-16 X 1.000 HX G5 ZN
5	705178	705178	6	CS .375-16 X 1.750 HX G5 ZN
6	041152	041152	8	NT .312-24 HX ZN
7	768523	768523	18	FW .343X .687 X .051/.080 HD ZN/YL
8	348946	348946	2	STEERING ARM MOUNT
9	348888	348888	1	STEERLEVER SUPPORT LH
	348714	348714	1	STEERLEVER SUPPORT RH
10	055822	055822	8	CS .375-16 X .750 HX G5 ZN
11	781716	781716	4	SS .500-13 X 1.75 SH ZN
12	053199	053199	2	NT .500-13 HX JAM ZN
13	348987	348987	1	STEERING CONTROL PANEL
14	348862	348862	4	STEERLEVER BUSHING
15	086660	086660	8	NT .375-16 HX LK NY
16	781583	781583	2	BRAKE ROD ASSEMBLY
17	063198	063198	4	CS 10-24 X .750 HXFLK ZN
18	781211	781211	2	PUSH BUTTON SWITCH
19	781286	781286	2	PUMP ROD ADJUSTER ASSEMBLY
20	783696	783696	2	CENTERING DAMPER
21	781922	781922	4	DAMPER BALL STUD
22	704163	704163	2	CS .250-20 X 2.00 HX G5 ZN
23	768515	768515	4	FW .281 X .625 X .051/.080 HD ZN/YL
24	068551	068551	2	NT .250-20 HX NL ZN
25	367557	367557	2	PUMP ARM
26	348797	348797	2	ADJUSTABLE PIVOT
27	781153	781153	4	BUSHING
28	005116	005116	4	CS .375-16 X 1.375 HX G5 ZN
29	054502	054502	4	NT .375-16 HX GRD 5 ZN
30	034272	034272	8	NT .312-18 HX G5 ZN
31	781765	781765	2	BRAKE DRUM-HUB ASSEMBLY
<b>3</b>	781112	781112	1	BRAKE ASSEMBLY
<b>4</b>	781351	781351	1	BRAKE ASSEMBLY
33	036236	036236	4	CS .312-18 X 1.000 HX G5 ZN
34	350272	350272	2	BRAKE ARM EXTENSION
35	350330	350330	1	L.S. BRAKE PIVOT ARM
	350264	350264	1	R.S. BRAKE PIVOT ARM
36	765339	765339	4	BUSHING
37	059832	059832	4	NT #10-24 HX NL ZN
38	782979	782979	2	CS .375-16 X 4.75 HX G5 ZN
39	065516	N/A	2	ROSS CASTLE NUT
40	350397	350397	2	BRAKE LINK TURNBUCKLE
41	064337	N/A	2	ROSS KEY

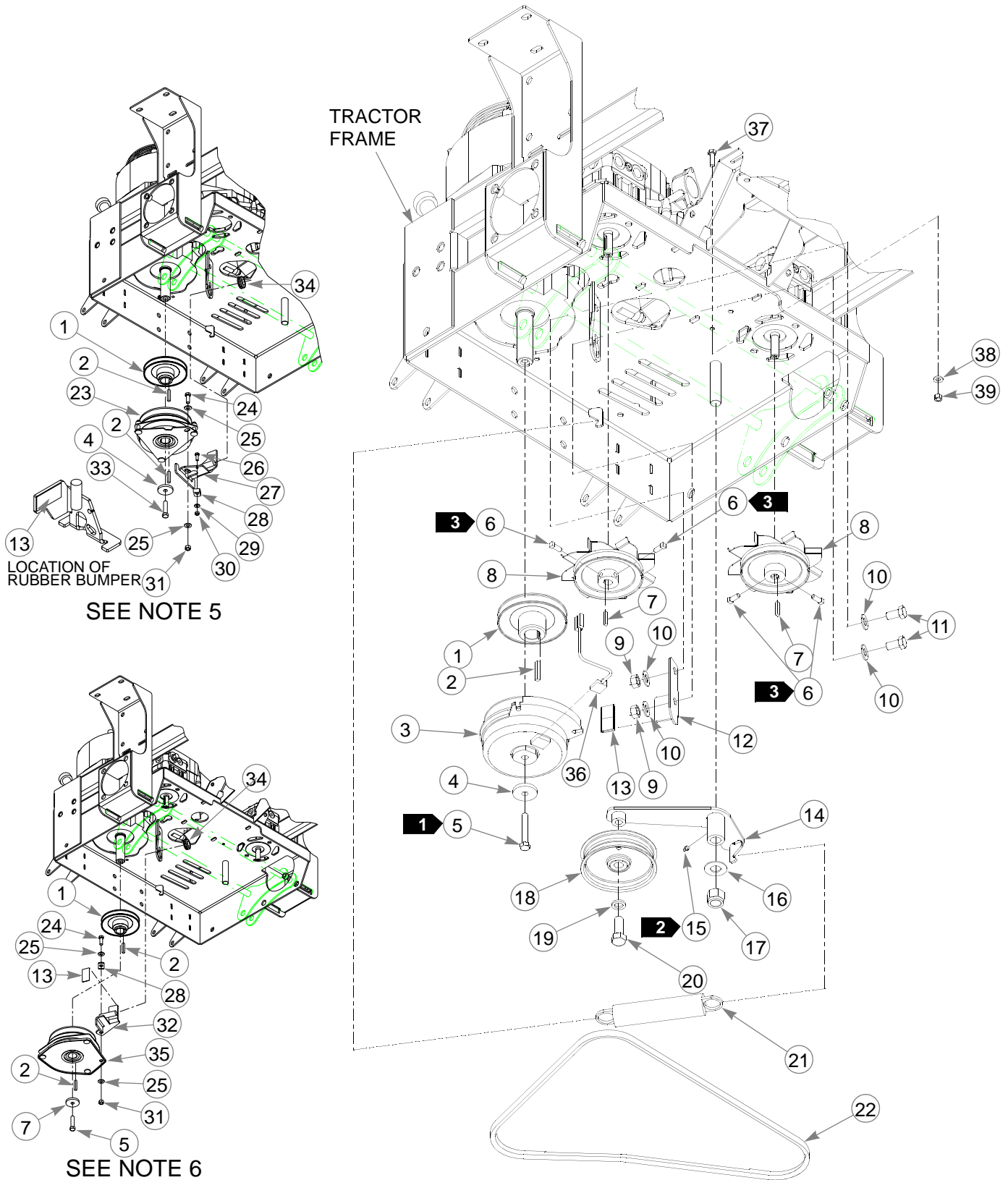
## NOTES:

- 
1. Torque to 474.5-508.4 N-m. Included with wheel motor.
  2. Torque brake assembly mounting bolts to 135.6 N-m.
  3. 781112 used on left wheel.
  4. 781351 used on right wheel.

---

**This page intentionally left blank.**

# Pump Belt and Pulleys Installation



# Pump Belt and Pulleys Installation

INDEX NO.	SERVICE PART NO.	MFG. PART NO.	QTY	DESCRIPTION
	779876	779876	1	ENGINE SC SINGLE PULLEY
<b>4</b>	212076	212076	1	KEY 1/4 SQ X 1.50 LONG
	787366	787366	1	WARNER CLUTCH
	783829	783829	1	FW .460 X 1.750 X .250 ZNYC
	785659	785659	1	CS .437-20 X 2.50 HX G5 ZNYC
	083196	083196	4	SS .312-18 X .750 SQ-HD ZN
	768127	768127	2	KEY 5MM X 30MM RADIUS ENDS
	325308	325308	2	PULLEY & FAN
	008193	008193	2	NT .500-13 HX G5 ZNYC
	767962	767962	4	FW .531 X 1.063 X .090 SAE HD ZN
	016527	016527	2	CS .500-13 X 1.00 HX G5 ZNYC
	366765	366765	1	CLUTCH ANCHOR ANGLE
	784918	784918	2	RUBBER BUMPER
	349761	349761	1	PUMP IDLER ARM
	015495	015495	1	STRAIGHT GREASE FITTING
	025296	025296	1	FW .760 X 1.625 X .08 ZN
	061101	061101	1	NT .750-10 HX NL ZN
	781856	781856	1	IDLER PULLEY
	028118	028118	1	FW .62 X 1.00 X.134 ZN
	794446	794446	1	CS .625-11 X 1.50 HX G5 ZN
	781302	781302	1	IDLER SPRING
	781443	781443	1	A-SEC PUMP IDLER BELT
<b>7</b> <b>5</b>	N/A	N/A	1	OGURA GT2 CLUTCH (787408)
	036244	N/A	1	CS .375-16 X 1.000 HX G5 ZN
	767954	N/A	2	FW .406 X .812 X .060 SAE HD ZN
	055939	N/A	1	CS .250-20 X .750 HX G5 ZN
	362392	N/A	1	CLUTCH ANCHOR BRACKET
	778738	N/A	1	.312 WIRING CLAMP
	768515	N/A	1	FW .281 X .625 X .051/.080 HD ZN/YL
	024927	N/A	1	NT .250-20 HX GR.5 ZN
	054502	N/A	1	NT .375-16 HX GRD 5 ZN
	366823	N/A	1	CLUTCH ANCHOR BRACKET
	778217	N/A	1	CS .437-20 X 2.250 G5 ZNYC
	748681	N/A	1	GM .75 X 1.35 X 1.06 X .18 GROMMET
<b>7</b> <b>6</b>	N/A	N/A	1	OGURA GT3 CLUTCH (786228)
	791251	791251	1	HARNESS, CLUTCH PIGTAIL(DIODE)
	036236	036236	1	CS .312-18X1.000 HX G5 ZNYC
	768523	768523	1	FW .343 X .687 X .051/.080 HD ZNYC
	034272	034272	1	NT .312-18 HX G5 ZNYC

## NOTES:

1. Torque to 61.0-65..1 N-m.
2. Apply grease at zerk (see owner's manual).
3. Torque to 16.3-20.3 N-m.

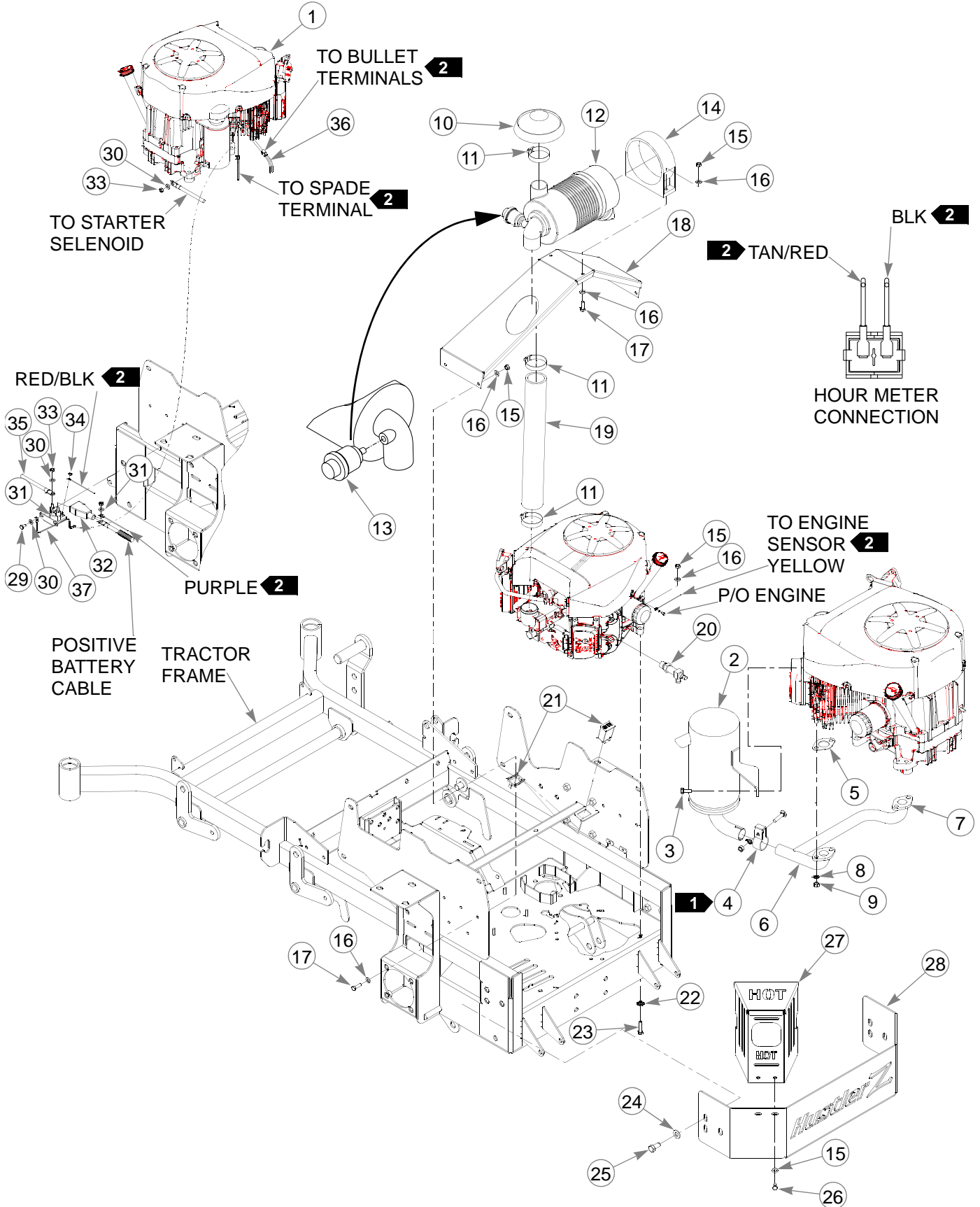
- 
4. Included with Honda 24 HP engine (785014).
  5. Alternative use clutch (Ogura GT2).
  6. Alternative use clutch (Ogura GT3).
  7. Order 781039K for replacement clutch.
  8. **Electric clutch burnishing procedure:** After installing a new clutch it is important to burnish the clutch to insure maximum deck clutch life. In an open area with no bystanders set the engine speed to half throttle. Cycle the deck clutch on for 15 seconds, and then off for 15 seconds. Repeat this operation 10 times, it will require about 5 minutes to complete.

---

## Chapter 5 Contents

Kawasaki Engine Installation . . . . .	5-2
Fuel System Installation . . . . .	5-6
Instrument Panel Assembly . . . . .	5-8
Electrical Schematic (783894) . . . . .	5-10

# Kawasaki Engine Installation





# Kawasaki Engine Installation

	ITEM NO.	SERVICE PART NO.	MFG. PART NO.	QTY	DESCRIPTION
<b>5</b>	1	777656	777656	1	KAWASAKI 23 HP ENGINE
	2	781724	781724	1	MUFFLER
	3	720177	720177	2	CS M 8-1.25 X 20 10.9 HXFL ZN
	4	782649	782649	1	KAW (23) EXHAUST PIPE CLAMP
	5	780841	780841	2	KAW (23) MUFFLER GASKET
	6	781732	781732	1	MUFFLER MANIFOLD
	7	360693	360693	1	HEAT SHIELD
	8	017004	017004	4	LW .312 MED SPRING ZN
	9	782664	782664	4	NT M8-1.25 HX STAINLESS STEEL
<b>5</b>	10	786673	786673	1	DONALDSON AIR CLEANER CAP
	11	057661	057661	2	HOSE CLAMP
	12	782763	782763	1	AIR CLEANER
	13	788943	788943	1	AIR FILTER INDICATOR
	14	785741	785741	1	MOUNTING BAND
	15	034272	034272	10	NT .312-18 HX G5 ZN
	16	768523	768523	18	FW .343 X .687 X .051/.080 HD ZN/YL
	17	036236	036236	6	CS .312-18 X 1.00 HX G5 ZNYC
	18	366443	366443	1	REMOTE AIR CLEAN MOUNT BRACKET
	19	786038	786038	1	REMOTE AIR FILTER HOSE
<b>7</b>	20	796524	796524	1	OIL DRAIN M20 X 2.5 VALVE
	21	769166	769166	1	HOUR METER
	22	029876	029876	4	LW .312 INT-EXT TOOTH ZN
	23	052837	052837	4	CS .312-18 X 1.500 HX G5 ZN
	24	767962	767962	6	FW .531 X 1.063 X .090 SAE HD ZN
	25	016527	016527	6	CS .500-13 X 1.00 HX G5 ZN
	26	064006	064006	2	CS .312-18 X .625 HX G5 ZN
	27	350371	350371	1	MUFFLER GUARD
	28	349704	349704	1	ENGINE CAGE MOUNT PLATE
	29	055947	055947	2	CS .250-20 X .500 HX G5 ZN
	30	768515	768515	5	FW .281 X .625 X .051/.080 HD ZN/YL
	31	030817	030817	1	STARTER SOLENOID
	32	771428	771428	1	RED BATTERY CABLE BOOT
	33	024927	024927	3	NT .250-20 HX GR.5 ZN
	34	044255	044255	1	NT #10-32 HX ZN
	35	768820	768820	1	BATTERY CABLE
	36	783894	783894	1	TRACTOR WIRE HARNESS
	37	792192	792192	1	STARTER RELAY GROUND WIRE

---

**NOTES:**

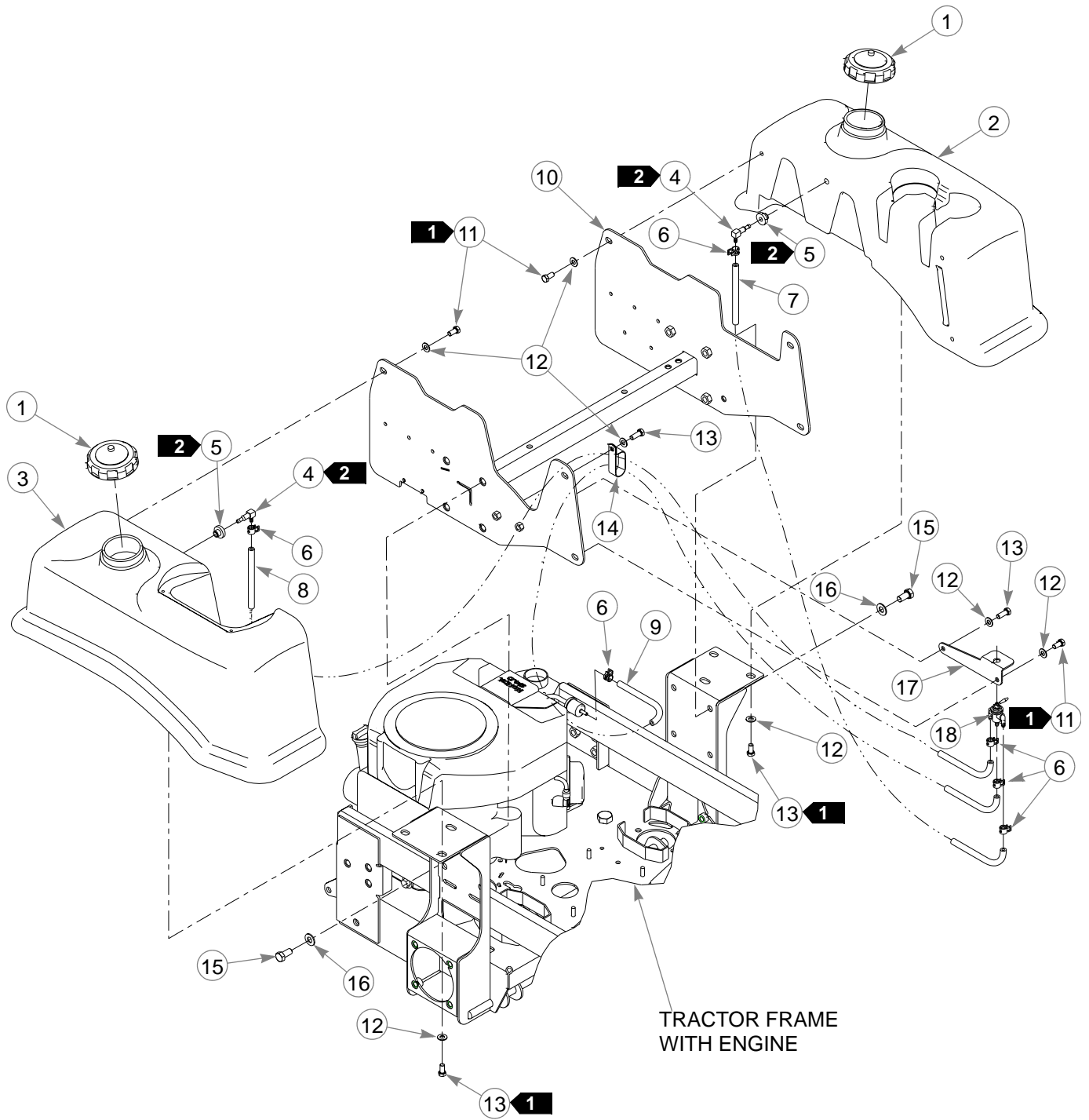
1. Includes mounting hardware.
2. Part of Item 37 (783984 Tractor Wire Harness).
3. Engine oil capacity; 1.893 L.
4. Engine RPM to be set at 2600±50.
5. Includes one (1) of Item 11 (057661 Hose Clamp).
6. When installing lower hose clamp on air cleaner hose, install as low as possible (against carburetor inlet).
7. Used on mowers with serial numbers 05031839 and higher. This part replaces "O" ring , drain extension, and drain plug, on mowers with serial numbers prior to 05031839.
8. Air filter service parts:

785261	MAIN AIR FILTER ELEMENT
763318	VACUATOR VALVE

---

**This page intentionally left blank.**

### 3 Fuel System Installation



---

## **3 Fuel System Installation**

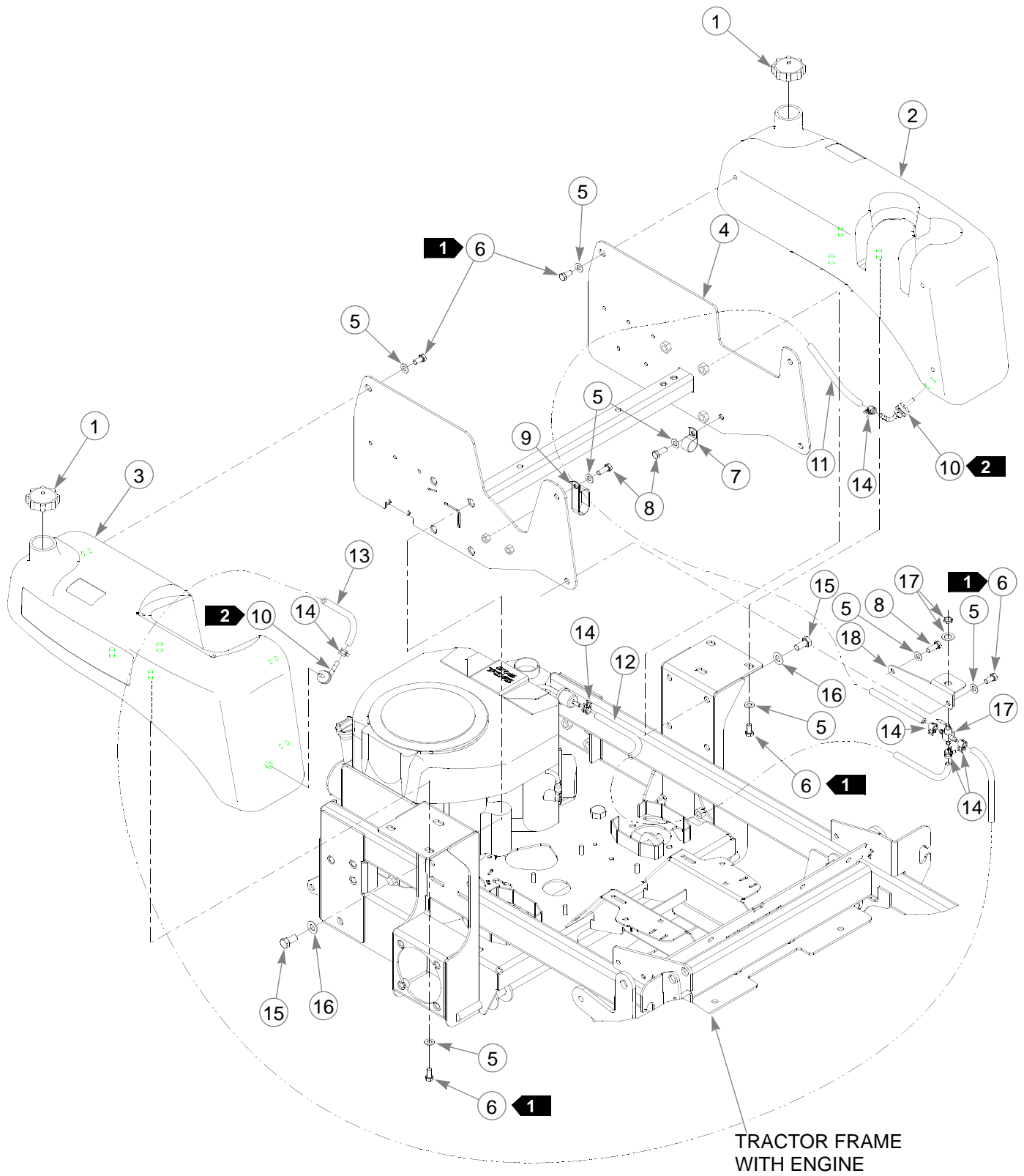
ITEM NO.	SERVICE PART NO.	MFG. PART NO.	QTY	DESCRIPTION
1	779306	779306	2	3.5" FUEL CAP
2	793240	793240	1	LEFT SIDE FUEL TANK
3	793232	793232	1	RIGHT SIDE FUEL TANK
4	792986	N/A	2	SITE-LINE FUEL FITTING (90°)
5	785295	N/A	2	GROMMET
6	000323	000323	6	CLIP
7	015818	015818	1	FUEL LINE 1156 MM
8	015818	015818	1	FUEL LINE 673.1 MM
9	015818	015818	1	FUEL LINE 571.5 MMKAWASAKI
	015818	015818	1	FUEL LINE 914.4 MMHONDA
	015818	015818	1	FUEL LINE 1067 MMKOHLER
10	349944	349944	1	REAR SEAT SUPPORT
11	055822	055822	12	CS .375-16 X .750 HX G5 ZN
12	767954	767954	14	FW .406 X .812 X .060 SAE HD ZN
13	036244	036244	2	CS .375-16 X 1.000 HX G5 ZN
14	045088	045088	1	HOSE CLAMP 1"
15	016527	016527	8	CS .500-13 X 1.00 HX G5 ZN
16	767962	767962	8	FW .531 X 1.063 X .090 SAE HD ZN
17	347989	347989	1	FUEL SHUT-OFF BRACKET
18	797084	797084	1	3-WAY NYLON FUEL VALVE
	000331	000331	3	BLACK CABLE TIE (NOT SHOWN)

---

### NOTES:

1. Torque to 27.1 N-m.
2. Supplied with new fuel tank.
3. Used on mowers with serial number 05042114 and later.

## 4 Fuel System Installation



---

## **4 Fuel System Installation**

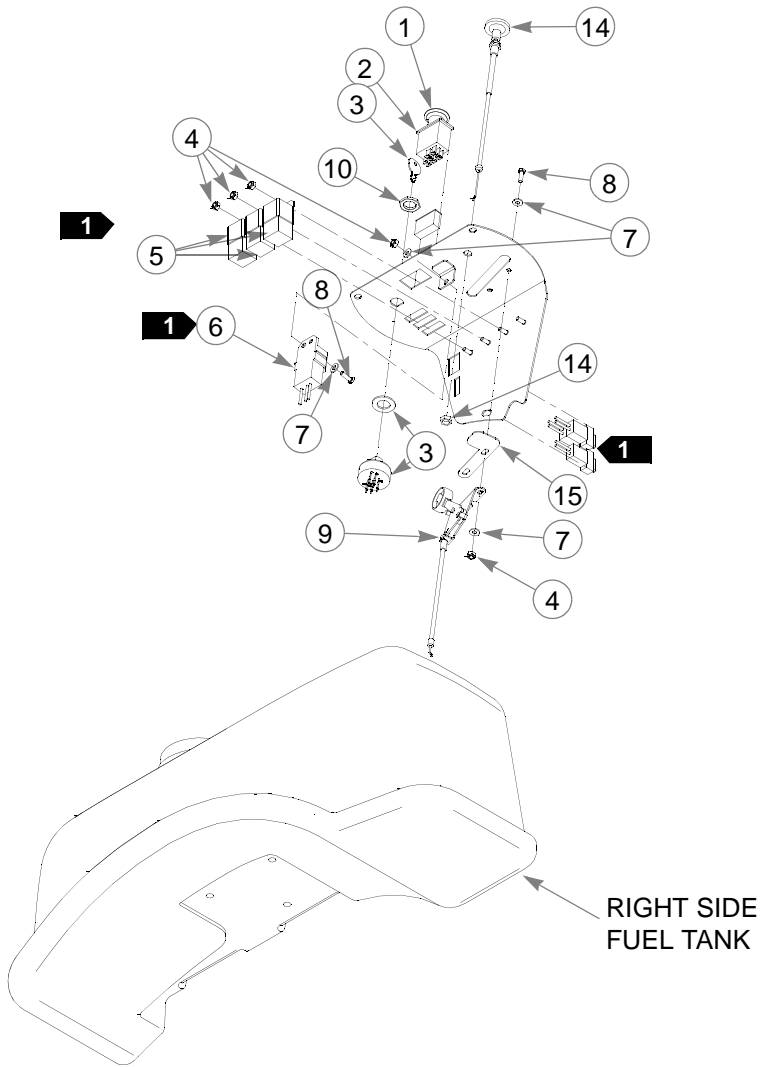
ITEM NO.	SERVICE PART NO.	MFG. PART NO.	QTY	DESCRIPTION
1	784181	N/A	2	FUEL TANK CAP
2	796326	N/A	1	LEFT SIDE FUEL TANK
3	796318	N/A	1	RIGHT SIDE FUEL TANK
4	349944	N/A	1	REAR SEAT SUPPORT
5	767954	N/A	15	FW .406 X .812 X .060 SAE HD ZN
6	055822	N/A	12	CS .375-16 X .750 HX G5 ZN
7	000398	N/A	1	CLAMP
8	036244	N/A	3	CS .375-16 X 1.000 HX G5 ZN
9	045088	N/A	1	HOSE CLAMP 1"
10	791277	N/A	2	90° FUEL TANK FITTING
11	015818	N/A	1	FUEL LINE 1270 MM TOTAL
12	015818	N/A	1	FUEL LINE 635 MM TOTAL
13	015818	N/A	1	FUEL LINE 177 MM TOTAL
14	000323	N/A	6	CLIP
15	016527	N/A	8	CS .500-13 X 1.00 HX G5 ZN
16	767962	N/A	8	FW .531 X 1.063 X .090 SAE HD ZN
17	745059	N/A	1	3-WAY FUEL VALVE
18	347989	N/A	1	FUEL SHUT-OFF BRACKET
	000331	N/A	3	BLACK CABLE TIE (NOT SHOWN)

---

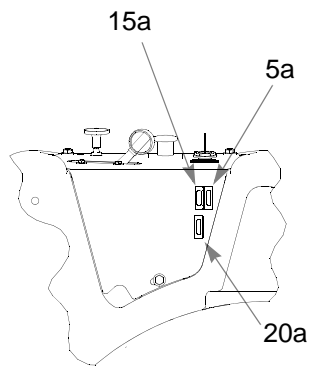
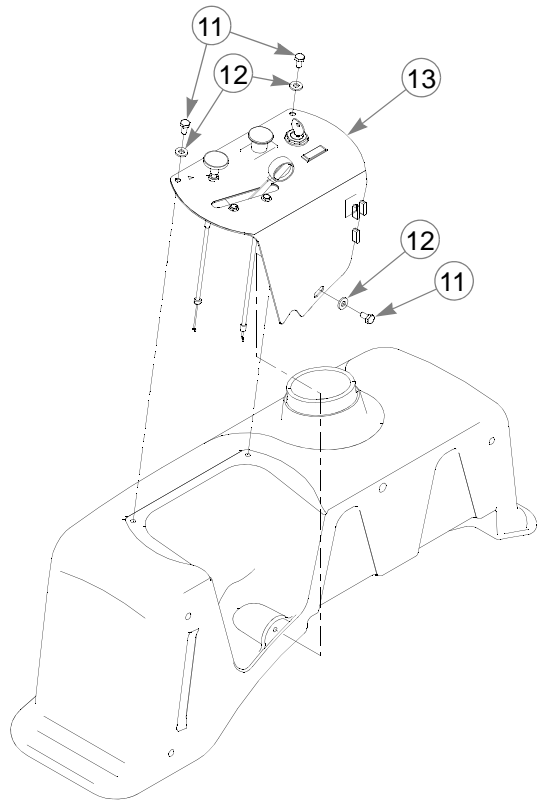
### NOTES:

1. Torque to 27.1 N-m.
2. Supplied with new fuel tank.
3. Fuel valve kit for tractors without valve: 353748
4. Used on mowers with serial number prior to 05042114.

# Instrument Panel Assembly



RIGHT SIDE  
FUEL TANK



FUSE SIZE  
AND LOCATION



---

## **Instrument Panel Assembly**

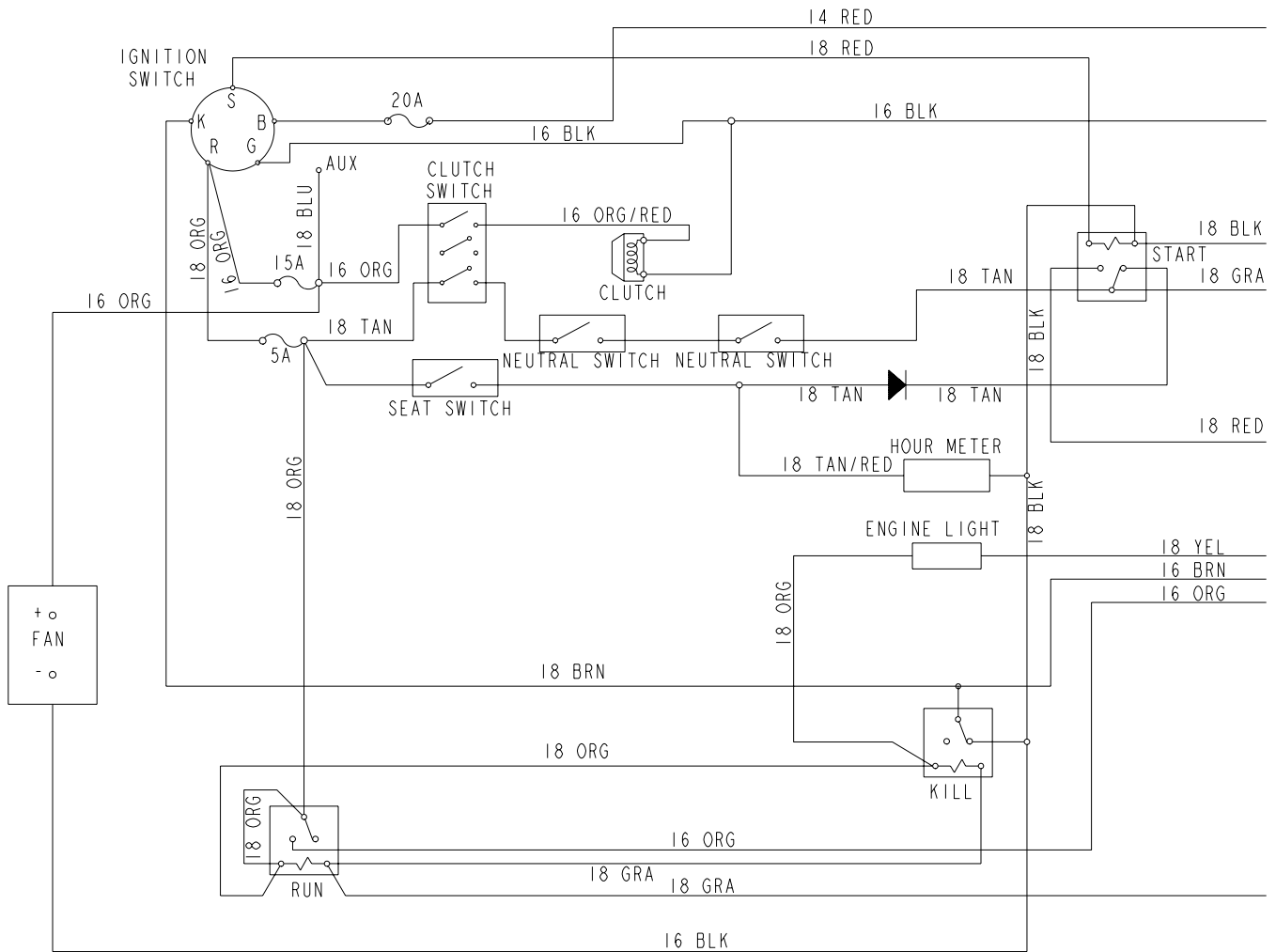
<b>ITEM NO.</b>	<b>SERVICE PART NO.</b>	<b>MFG. PART NO.</b>	<b>QTY</b>	<b>DESCRIPTION</b>
1	776476	776476	1	PTO SWITCH
2	083022	N/A	2	IGNITION KEY
2	785808	785808	1	INDAK COATED KEY
3	045898	045898	1	KEY SWITCH
4	059832	059832	6	NT #10-24 HX NL ZN
5	026237	N/A	3	RELAY
6	762195	N/A	1	DELAY MODULE
7	704932	704932	6	FW .219 X .500 X .048 ZN
8	714998	714998	3	MS #10-24 X .625 HX ZN
9	778365	778365	1	THROTTLE/CHOKE CABLE
10	712257	712257	1	RED INDICATOR LIGHT
11	055947	055947	3	CS .250-20 X .500 HX G5 ZN
12	768515	768515	3	FW .281 X .625 X .051 /.080 HD ZN/YL
13	349308	349308	1	INSTRUMENT PANEL
14	785030	785030	1	Z CHOKE CABLE
15	102707	102707	1	CE THROTTLE STOP

---

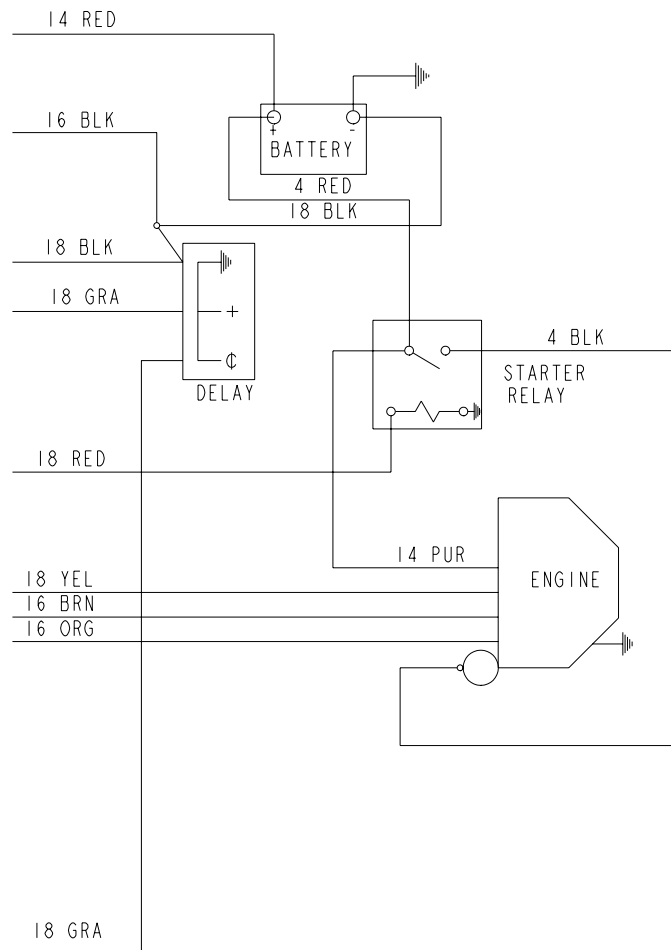
### **NOTES:**

1. Part of 783894 (Tractor Wire Harness)

# Electrical Schematic (783894)



# Electrical Schematic (783894)



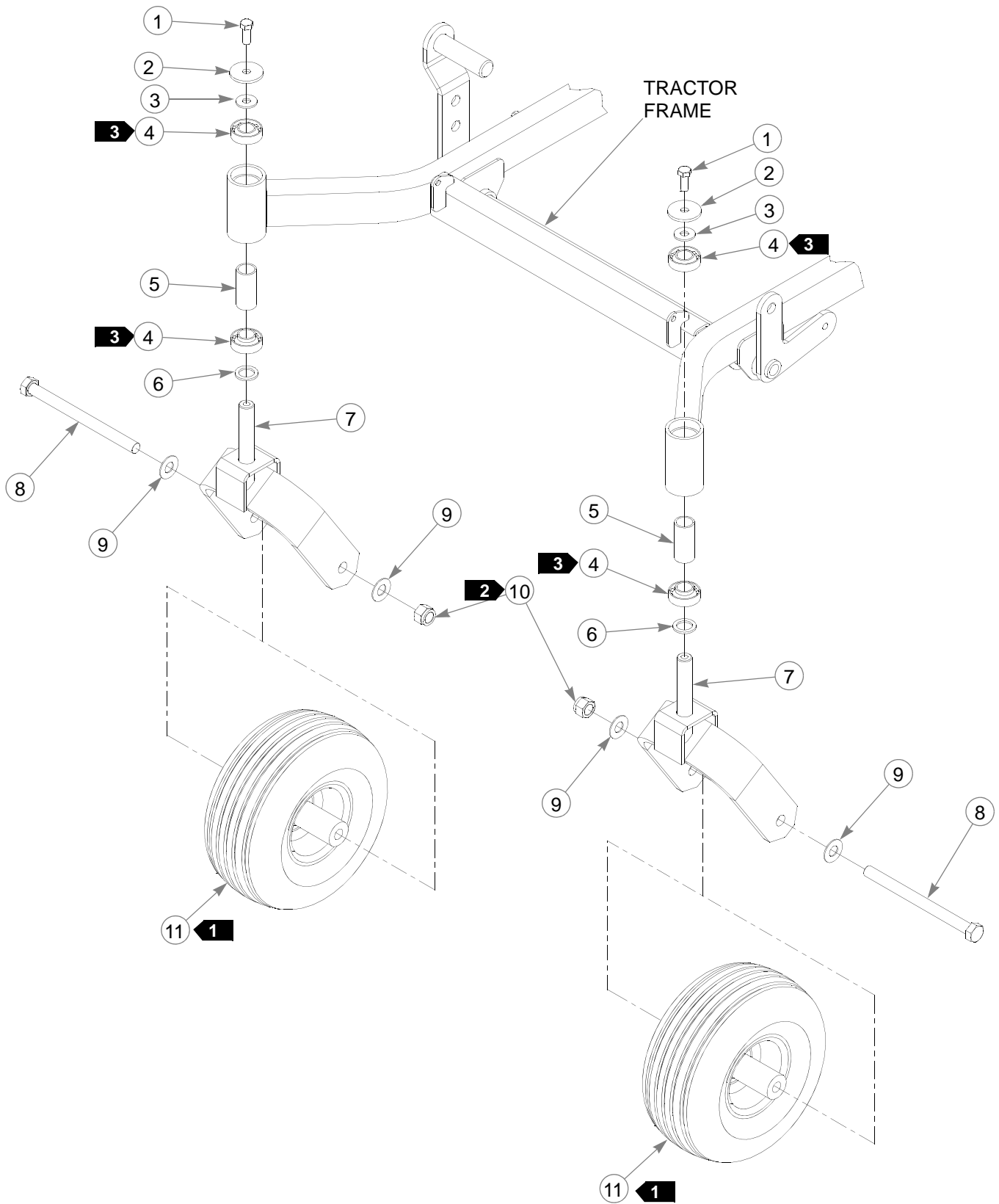
---

---

## Chapter 6 Contents

Front Wheel Assembly. . . . .	6-2
Front Wheel Breakdown—747782. . . . .	6-4
Option Semi-Pneumatic Tire/Wheel Breakdown—789537 . . . . .	6-5
Drive Wheel Assembly. . . . .	6-6
Anti-Rollover Wheel Assembly . . . . .	6-7

# Front Wheel Assembly



---

## **Front Wheel Assembly**

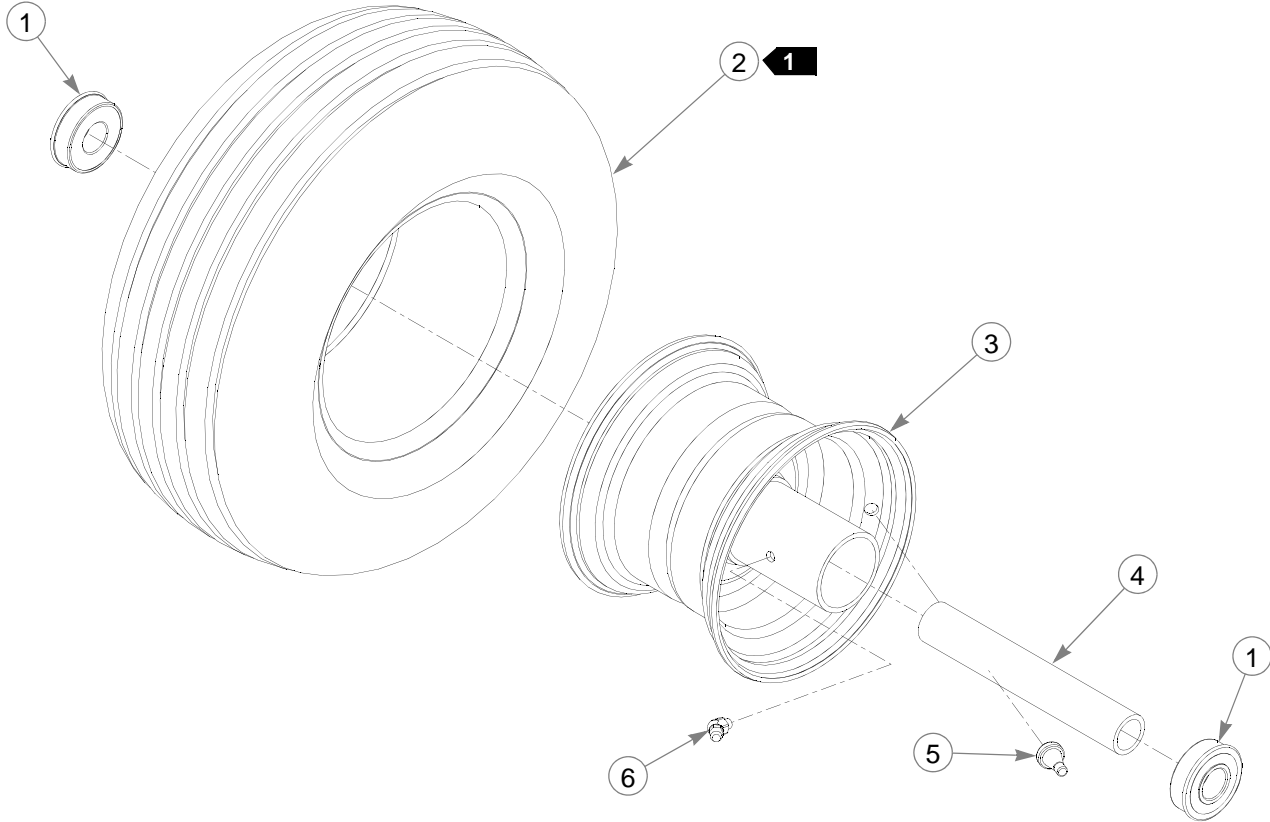
<b>INDEX NO.</b>	<b>SERVICE PART NO.</b>	<b>MFG. PART NO.</b>	<b>QTY</b>	<b>DESCRIPTION</b>
1	705954	705954	2	CS .500-13 X 1.25 HX G5 ZN
2	344267	344267	2	FW .510 X 2.15 X .187 SPL ZN
3	712976	712976	2	FW .531 X 1.375 X .125 ZNYC
4	784223	784223	4	BEARING W/O COLLAR
5	387035	387035	2	SPACER, 1.07 X 1.312 X 2.793
6	045765	045765	2	FW 1.030 X 1.500 X.134 ZN
7	349266	349266	2	FORK
8	041475	041475	2	CS .750-10 X 9.50 HX ZN
9	025296	025296	4	FW .760 X 1.625 X .08 ZN
10	061101	061101	2	NT .750-10 HX NL ZN
11	747782	747782	2	WHEEL & TIRE ASSY
	789537	N/A	2	OPTIONAL SEMI-PNEUMATIC WHEEL/TIRE ASSEMBLY

---

### **NOTES:**

1. Apply grease to zerks.
2. Torque to 135.6 N-m.
3. Assemble with extended inner race toward item 5 (387035 Spacer, 1.07 x 1.312 x 2.793).

# **Front Wheel Breakdown—747782**



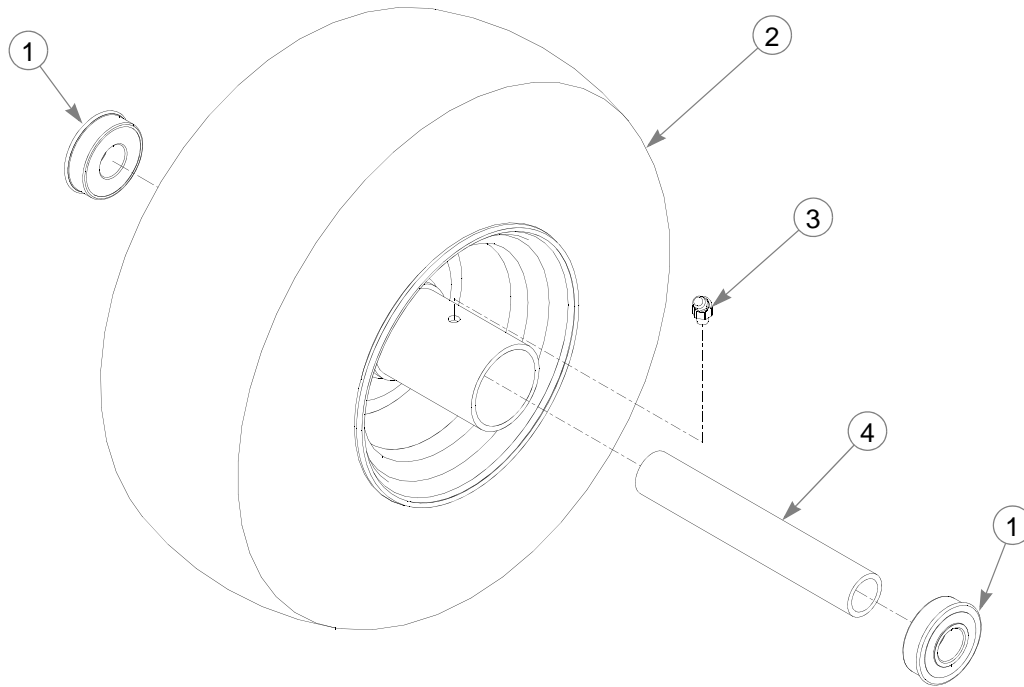
ITEM NO.	SERVICE PART NO.	MFG. PART NO.	QTY	DESCRIPTION
1	039677	N/A	2	WHEEL BEARING
2	747741	N/A	1	13 X 6.50 TIRE
3	747832	N/A	1	6 X 4.5 WHEEL
4	782771	N/A	1	BEARING SPACER
5	019521	N/A	1	TIRE VALVE
6	015511	N/A	1	GREASE FITTING 45 DEG 1/4

## **NOTES:**

1. Inflate tire to 55.16-68.95 kPa.



# Optional Semi-Pneumatic Tire/Wheel—789537



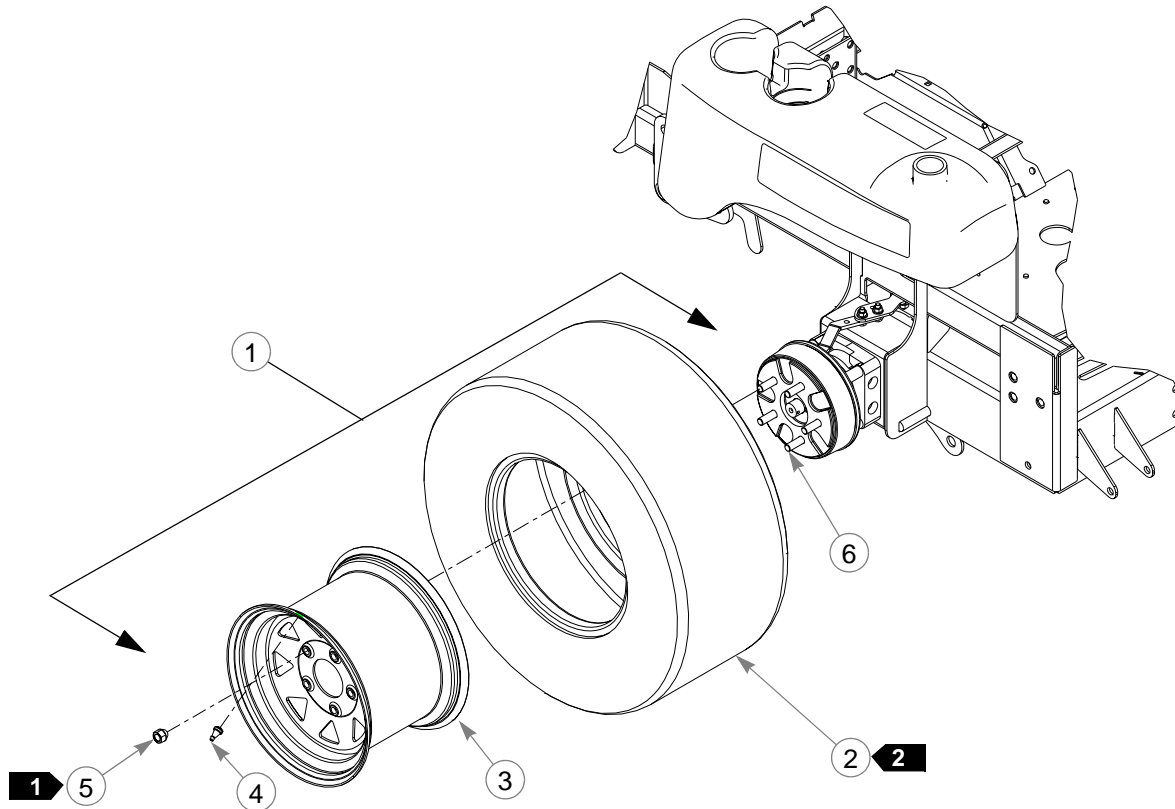
---

ITEM NO.	SERVICE PART NO.	MFG. PART NO.	QTY	DESCRIPTION
1	039677	N/A	2	WHEEL BEARING
2	789537	N/A	1	TIRE/WHEEL ASSEMBLY
3	015511	N/A	1	GREASE FITTING 45 DEG 1/4
4	782771	N/A	1	BEARING SPACER

---

## NOTES:

# Drive Wheel Assembly Installation

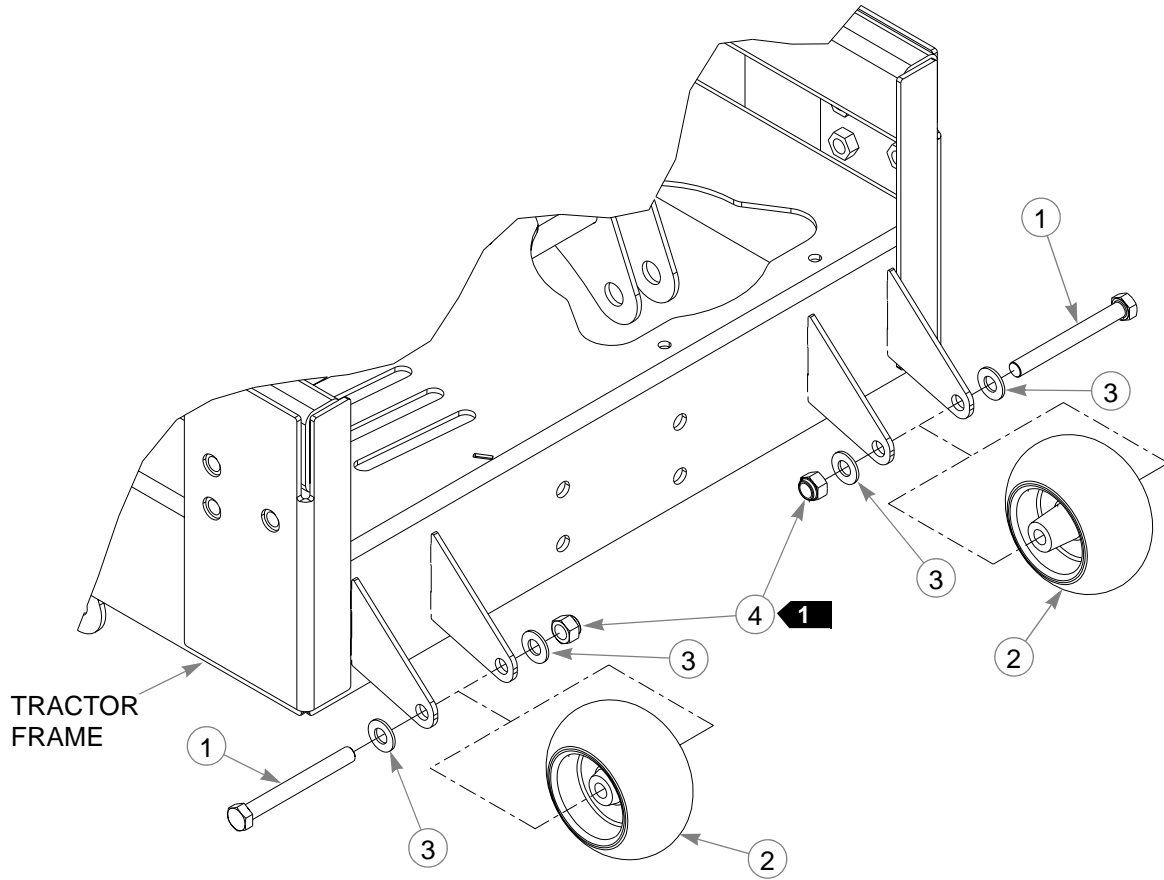


INDEX NO.	SERVICE PART NO.	MFG. PART NO.	QTY	DESCRIPTION
1	782078	782078	2	WHEEL & TIRE ASSY FOR 52"
2	782284	N/A		TIRE, 23 X 9.50-12 FOR 52"
3	782086	N/A		WHEEL ASSEMBLY 12 X 7.00 FOR 52"
4	019521	N/A	2	TIRE VALVE
5	061077	061077	5	WHEEL NUT (QTY PER WHEEL)
6	770859	N/A	10	1/2" WHEEL LUG STUD (QTY PER TRACTOR)

## NOTES:

1. Torque to 88.13-101.7 N-m.
2. Inflate tire to 55.16-68.95 kPa.

# Anti-Rollover Wheel Assembly



INDEX NO.	SERVICE PART NO.	MFG. PART NO.	QTY	DESCRIPTION
1	068239	068239	2	CS .500-13 X 4.500 HX G5 ZN
2	031997	031997	2	ANTI-SCALP WHEEL
3	767962	767962	4	FW .531 X 1.063 X .090 SAE HD ZN
4	781567	781567	2	NT .50-13 HX LK NY

## NOTES:

1. Do not torque, wheel must turn freely.

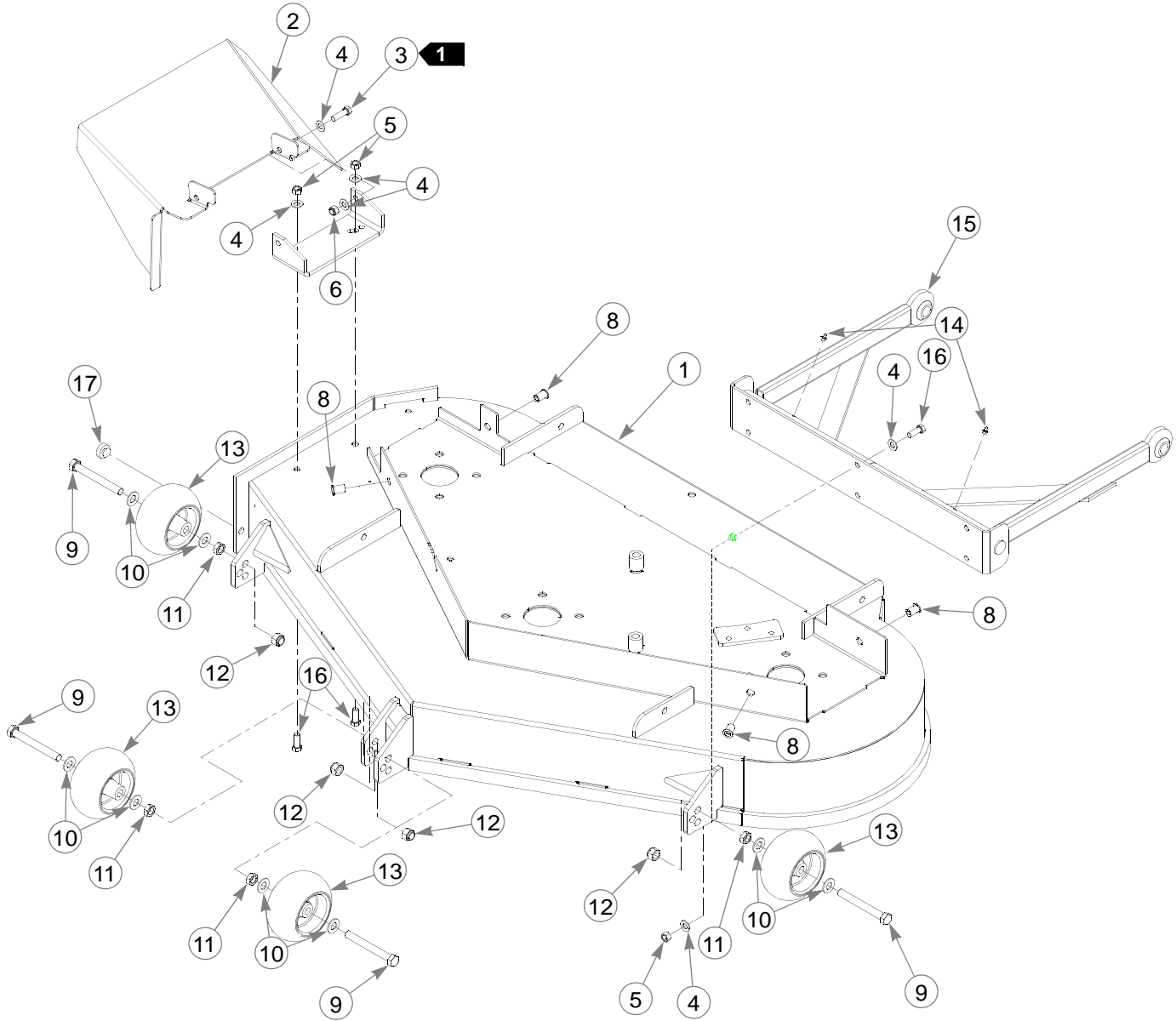
---

---

## Chapter 7 Contents

52" Deck Assembly . . . . .	7-2
52" Deck Pulley Assembly . . . . .	7-4
SpindleAssembly - 350595K . . . . .	7-7
SpindleAssembly - 796235 . . . . .	7-8

# 52" Deck Assembly



---

## **52" Deck Assembly**

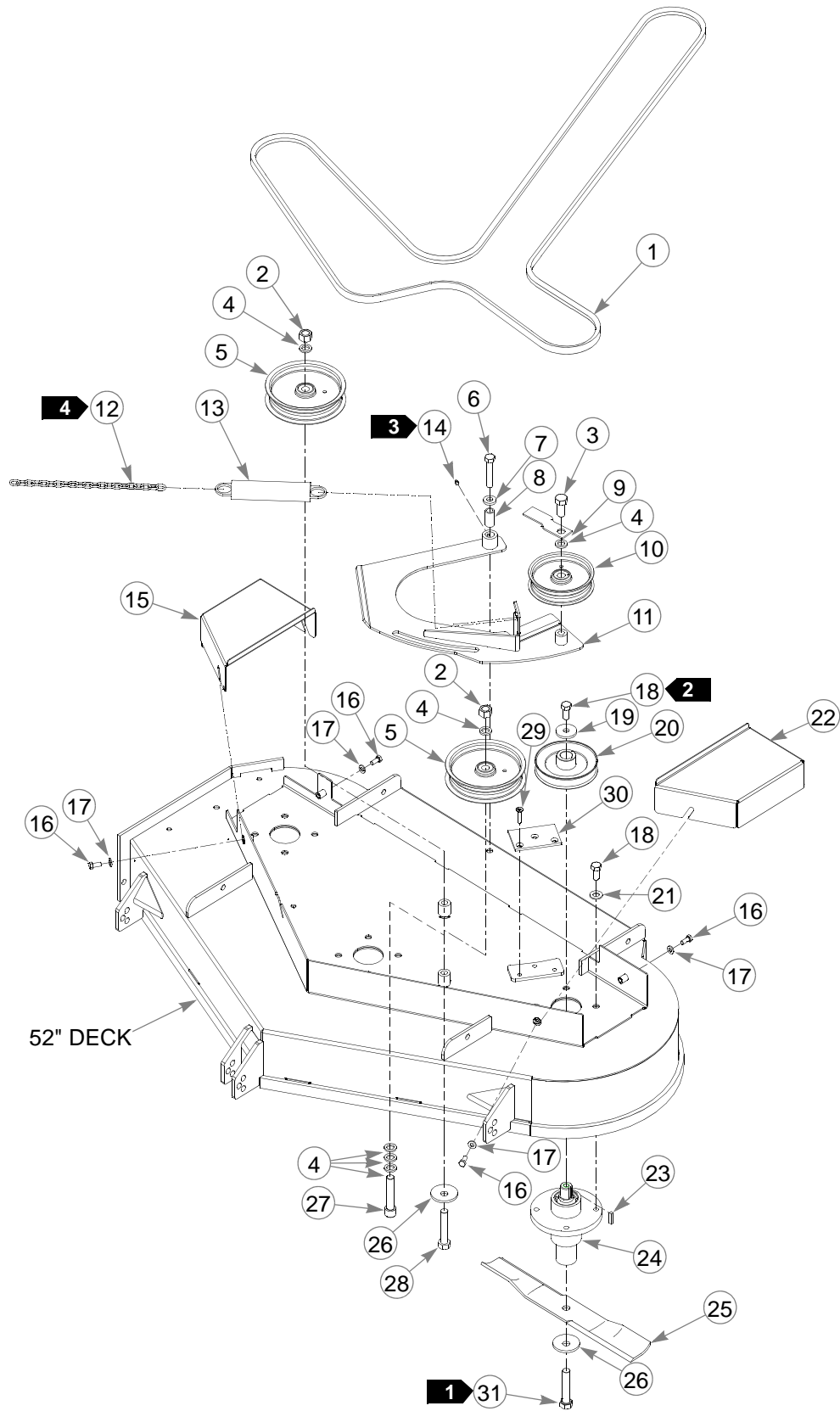
INDEX NO.	SERVICE PART NO.	MFG. PART NO.	QTY.	DESCRIPTION	
<b>3</b> ▶	1	545343	347195	1	52" DECK CRATED
	2	347971	347971	1	52" DISCHARGE CHUTE
	3	052860	052860	2	CS .375-16 X 1.25 HX G5 ZN
	4	767954	767954	18	FW .406 X .812 X .060 SAE HD ZN
	5	054502	054502	8	NT .375-16 HX GRD 5 ZN
	6	086660	086660	2	NT .375-16 HX LK NY
	7	317073	317073	1	DISCHARGE CHUTE MOUNT BRACKET
	8	N/A	808485	4	5/16-18 THREAD RIVET NUT
	9	781708	N/A	4	CS .500-13 X 4.25 HX G5 ZN
	10	767962	N/A	8	FW .531 X 1.063 X .090 SAE HD ZN
	11	053199	N/A	4	NT .500-13 HX JAM ZN
	12	781567	781567	4	NT .50-13 HX LK NY
	13	031997	N/A	4	ANTI-SCALP WHEEL
	14	015495	015495	2	STRAIGHT GREASE FITTING
	15	349803	349803	1	PUSHER
	16	036244	036244	8	CS .375-16 X1.00 HX G5 ZN
	17	781880	781880	1	BUMPER
<b>2</b> ▶		788166	788166	4	ANTI-SCALP WHEEL ASSEMBLY

---

### **NOTES:**

1. Do not torque, Item 2 (347971 Discharge Chute) must pivot freely.
2. Includes items 9, 10, 11, and 13.
3. .Service part deck includes decals (see "52" Deck Decals" in Chapter 9 on page 9-4 for listing of decals) and item 2 (Discharge Chute).

# 52" Deck Pulley Assembly





# 52" Deck Pulley Assembly

INDEX NO.	SERVICE PART NO.	MFG. PART NO.	QTY.	DESCRIPTION
1	782292	782292	1	B-SECTION BELT
2	016972	016972	2	NT .625-11 HX G5 ZNYC
3	794446	794446	1	CS .625-11 X 1.50 HX G5 ZN
4	028118	028118	6	FW .62 X 1.00 X .134 ZN
5	781385	781385	2	6.00" IDLER PULLEY
6	008573	008573	1	CS .500-13 X 2.50 HX G5 ZN
7	070037	070037	1	FW .530 X 1.06 X .19 HRD ZN
8	350561	350561	1	DECK IDLER BUSHING
9	347443	347443	1	DECK BELT IDLER TOP GUIDE
10	781856	781856	1	5.00" IDLER PULLEY
11	349498	349498	1	DECK IDLER ARM
12	373191	373191	1	SIDE MOUNT CHAIN
13	781302	781302	1	IDLER SPRING
14	015495	015495	1	STRAIGHT GREASE FITTING
15	347898	347898	1	RS 52" DECK PULLEY COVER
16	034280	034280	4	CS .312-18 X .750 HX G5 ZNYC
17	768523	768523	4	FW .343 X .687 X .051/.080 HD ZNYC
18	016527	016527	15	CS .500-13 X 1.00 HX G5 ZN
19	078386	078386	3	FW .510 X 1.75 X .18 ZN
20	768168	768168	3	DECK DRIVE PULLEY
21	767962	767962	12	FW .531 X 1.063 X .090 SAE HD ZN
22	347914	347914	1	LS 52" DECK PULLEY COVER
23	212472	212472	3	KEY 1/4 SQ X 1.00 LONG
<b>5</b> → 24	796235	796235	3	DECK SPINDLE ASSY
<b>6</b> → <b>7</b> → 25	350595K	N/A	3	DECK SPINDLE ASSY
25	795526	795526	3	BLADE,F17.86"-H-F-CW
<b>7</b> →	781898	N/A	3	BLADE,17.86"-M-O-CW
	783753	N/A	3	OPTIONAL BLADE,17.86"-M-O-CW
<b>8</b> →	785436	N/A	3	OPTIONAL BLADE,17.86"-GAT-F-CW
<b>7</b> → <b>8</b> →	782532	N/A	3	OPTIONAL BLADE,17.86"-GAT-O-CW
26	782474	782474	4	CW .631 X 2.250 X .187 PNT
27	783787	783787	1	CS .625-11 X 3.00 SH 2.50"MIN TH
28	783738	783738	1	CS .625-11X3.00 FULL HX G5 ZN
29	784199	784199	3	CS .312-1 8X 1.250 FLT SH ZNYC
30	783878	783878	1	IDLER CLAMP
31	029934	029934	3	CS .625-11 X 3.00 HX G5 ZNYC

## NOTES:

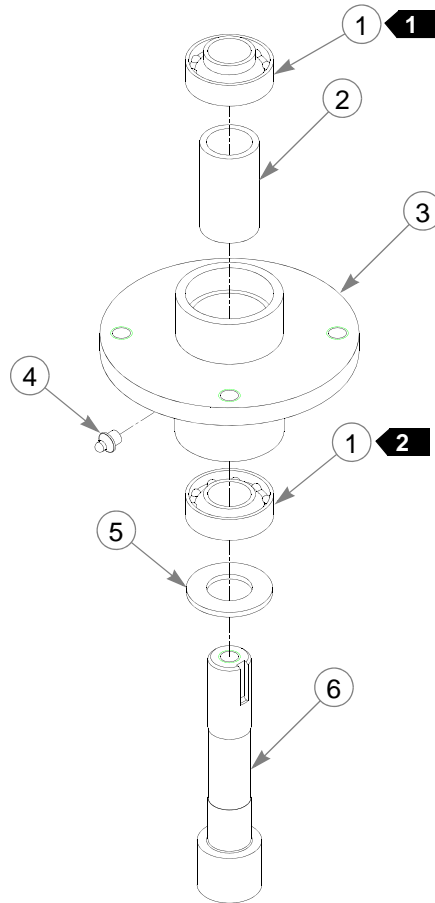
1. Torque to 160.0 N-m.
2. Torque to 88.1-101.7 N-m.
3. Apply grease to zerk (see owner's manual).
4. See "Deck Belt Routing and Tensioning" in Chapter 8 on page 8-4 for belt tensioning.
5. See "Spindle Assembly - 796235" in Chapter 7 on page 7-8 for breakdown.
6. See "Spindle Assembly - 350595K" in Chapter 7 on page 7-7 for

---

breakdown.

7. Used on mowers with serial number prior to 05011098.
8. Used with mulch kit only.

## Spindle Assembly - 350595K

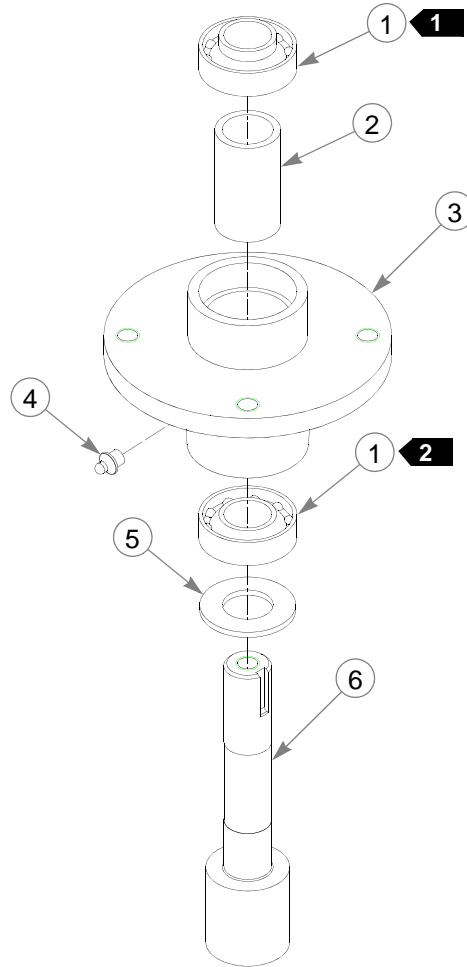


INDEX NO.	SERVICE PART NO.	MFG. PART NO.	QTY.	DESCRIPTION
1	077123	N/A	2	BEARING W/O COLLAR
2	766204	N/A	1	BLADE SPINDLE BUSHING
3	034843	N/A	1	CAST SPINDLE HOUSING
4	012005	N/A	1	GREASE FITTING
5	072272	N/A	1	FW 1.06 X 2.00 X.134 SAE ZN
6	788547	N/A	1	SADDLELESS SPINDLE SHAFT

### NOTES:

1. Install upper bearing with extended inner race up.
2. Install lower bearing with extended inner race down.
3. Used on mowers with serial number prior to ?

## Spindle Assembly - 796235



INDEX NO.	SERVICE PART NO.	MFG. PART NO.	QTY.	DESCRIPTION
1	077123	N/A	2	BEARING W/O COLLAR
2	766204	N/A	1	BLADE SPINDLE BUSHING
3	034843	N/A	1	CAST SPINDLE HOUSING
4	012005	N/A	1	GREASE FITTING
5	072272	N/A	1	FW 1.06 X 2.00 X .134 SAE ZN
6	796227	N/A	1	SADDLELESS SPINDLE SHAFT

### NOTES:

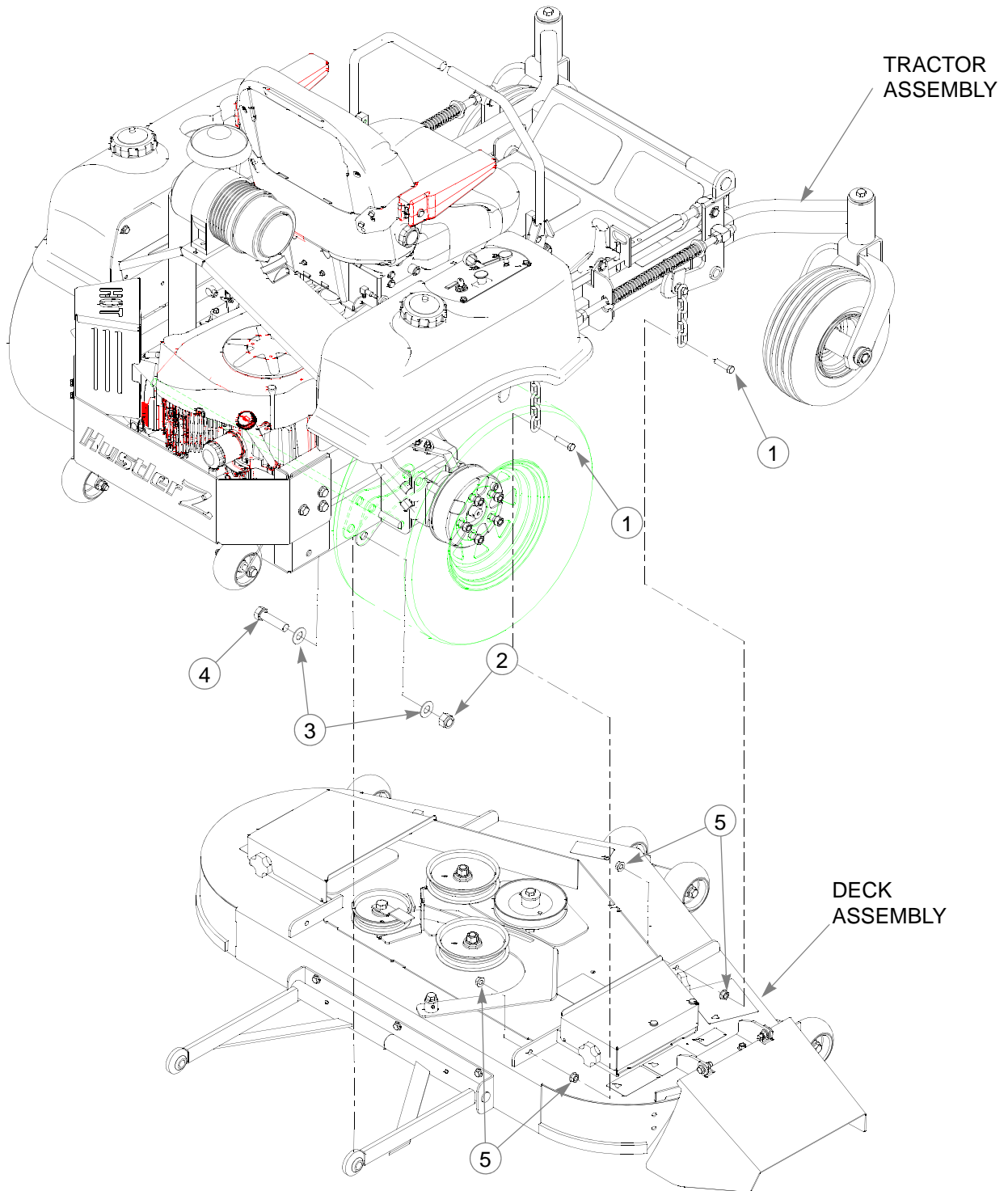
1. Install upper bearing with extended inner race up.
2. Install lower bearing with extended inner race down.

---

## Chapter 8 Contents

Deck Installation . . . . .	8-2
Deck Belt Routing and Tensioning. . . . .	8-4
Seat Installation . . . . .	8-6

# Deck Installation



---

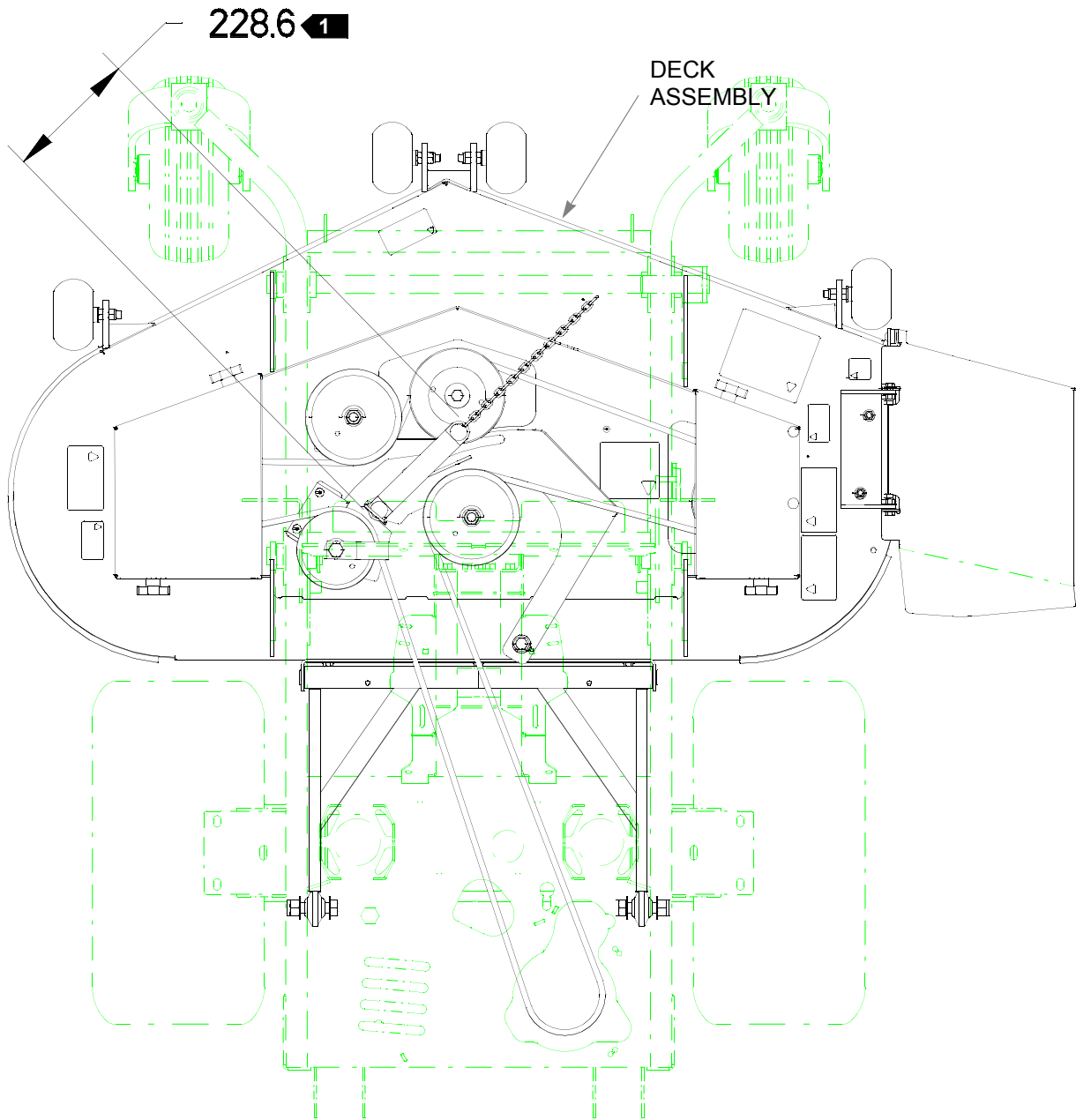
## **Deck Installation**

<b>ITEM NO.</b>	<b>SERVICE PART NO.</b>	<b>MFG. PART NO.</b>	<b>QTY</b>	<b>DESCRIPTION</b>
1	055749	055749	4	CS .437-14 X 1.750 HX G5 ZN
2	061101	061101	2	NT .750-10 HX NL ZN
3	025296	025296	4	FW .760 X 1.625 X.08 ZN
4	051169	051169	2	CS .750-10 X 3.000 HX G5 ZN
5	704643	704643	8	NT .437-14 HX FLG ZN

---

### **NOTES:**

# Deck Belt Routing and Tensioning



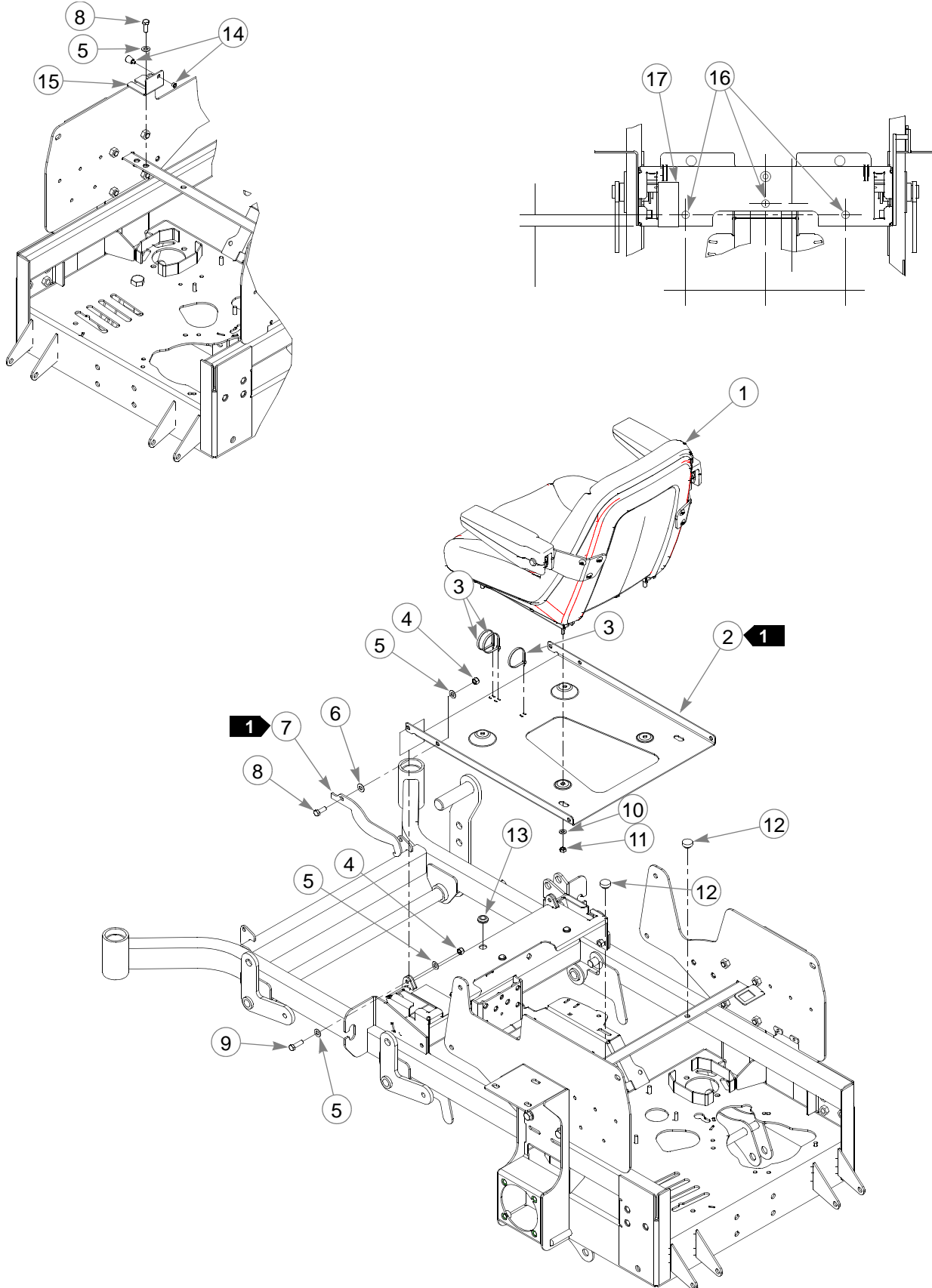


---

**NOTES:**

1. Spring length after tensioning belt. Measure spring from outside of hook to outside of hook.
2. Route belt as shown.

# Seat Installation



---

## **Seat Installation**

<b>INDEX NO.</b>	<b>SERVICES PART NO.</b>	<b>MFG. PART NO.</b>	<b>QTY</b>	<b>DESCRIPTION</b>
1	793661	793661	1	MICHIGAN STANDARD SEAT
2	350041	350041	1	SEAT PAN
3	000331	000331	3	BLACK CABLE TIE
4	086660	086660	3	NT .375-16 HX LK NY
5	767954	767954	7	FW .406 X .812 X .060 SAE HD ZN
6	724716	724716	1	FIBER WASHER
7	350421	350421	1	SEAT PAN STOP
8	036244	036244	3	CS .375-16 X 1.000 HX G5 ZN
9	052860	052860	2	CS .375-16 X1.250 HX G5 ZN
10	768523	768523	4	FW .343 X .687 X .051/.080 HD ZN/Y
11	034272	034272	4	NT .312-18 HX G5 ZN
12	781880	781880	2	BUMPER
13	080358	080358	1	GM .50 X 1.00 X .75 X .12 GROMMET
14	748756	748756	1	LATCH SPRING PLUNGER
15	350462	350462	1	SEAT LATCH BRACKET
16	781617	781617	3	RUBBER BUMPER
17	722199	722199	1	2" WIDE SCOTCH POLYURETHANE 5.55" LONG

---

### **NOTES:**

1. Must pivot freely.
2. Service parts available for Michigan Standard seat;

<b><u>PART NO.</u></b>	<b><u>DESCRIPTION</u></b>
793695	SLIDE KIT
797464	L.H. ARMREST ASSMBLY
797472	R.H. ARMREST ASSMBLY
793315	SEAT SWITCH
797480	MOLDED ARMREST KIT (INCLUDES BOTH ARMRESTS)
793273	ARMREST STOP ASSY

3. Service parts available for Michigan Suspension seats:

<b><u>PART NO.</u></b>	<b><u>DESCRIPTION</u></b>
793307	SLIDE KIT
793323	KNOB KIT
793281	BACK CUSHION KI
793299	SEAT CUSHION KIT
793315	SEAT SWITCH
797480	MOLDED ARMREST (FITS BOTH SIDES)
793273	ARMREST STOP ASSEMBLY
797571	SEAT BACK PANEL KIT

4. Service parts available for Milsco seats:

<b><u>PART NO.</u></b>	<b><u>DESCRIPTION</u></b>
782144	ADJUSTER, STANDARD AND LOW PROFILE SUSPENSION SEAT
782151	ARMREST FOR STANDARD SEAT

---

---

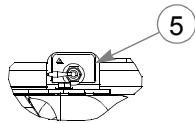
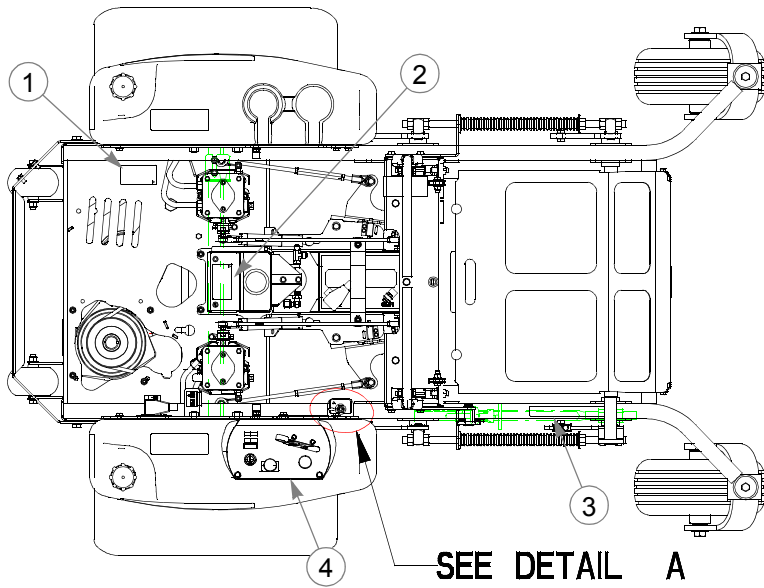
<u>PART NO.</u>	<u>DESCRIPTION</u>
782169	ARMREST FOR LOW PROFILE SUSPENSION SEAT
782177	OPERATOR PRESENCE SWITCH FOR BOTH SEATS
782185	CUSHION/PAN FOR LOW PROFILE SUSPENSION SEAT
783472	Z ARMREST ONLY KIT

---

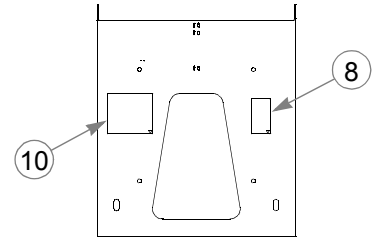
## Chapter 9 Contents

Tractor Decals .....	9-2
52" Deck Decals .....	9-4

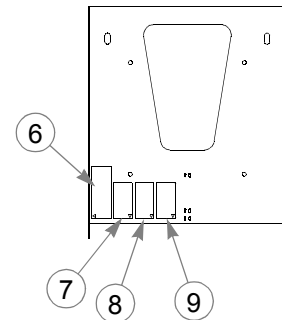
# Tractor Decals



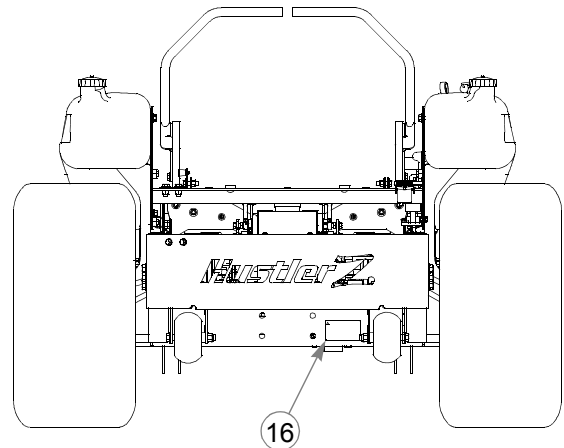
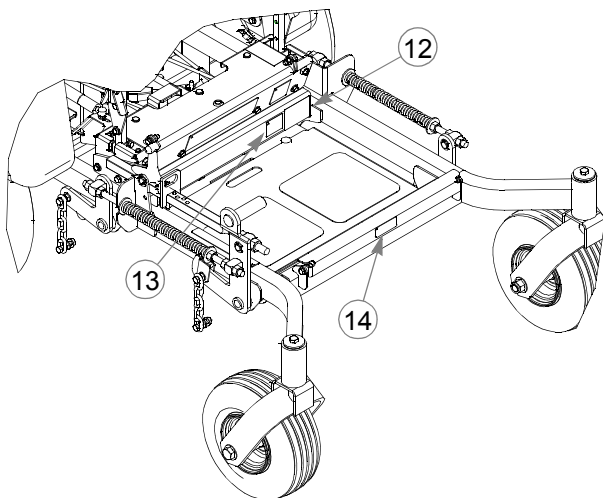
DETAIL A



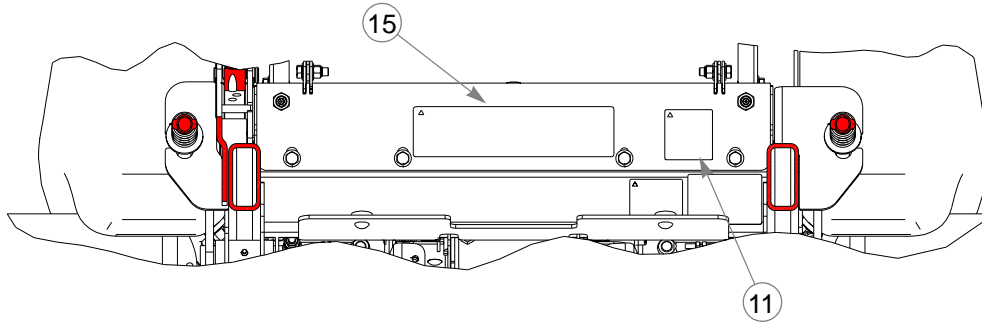
BOTTOM OF SEAT PAN



TOP OF SEAT PAN



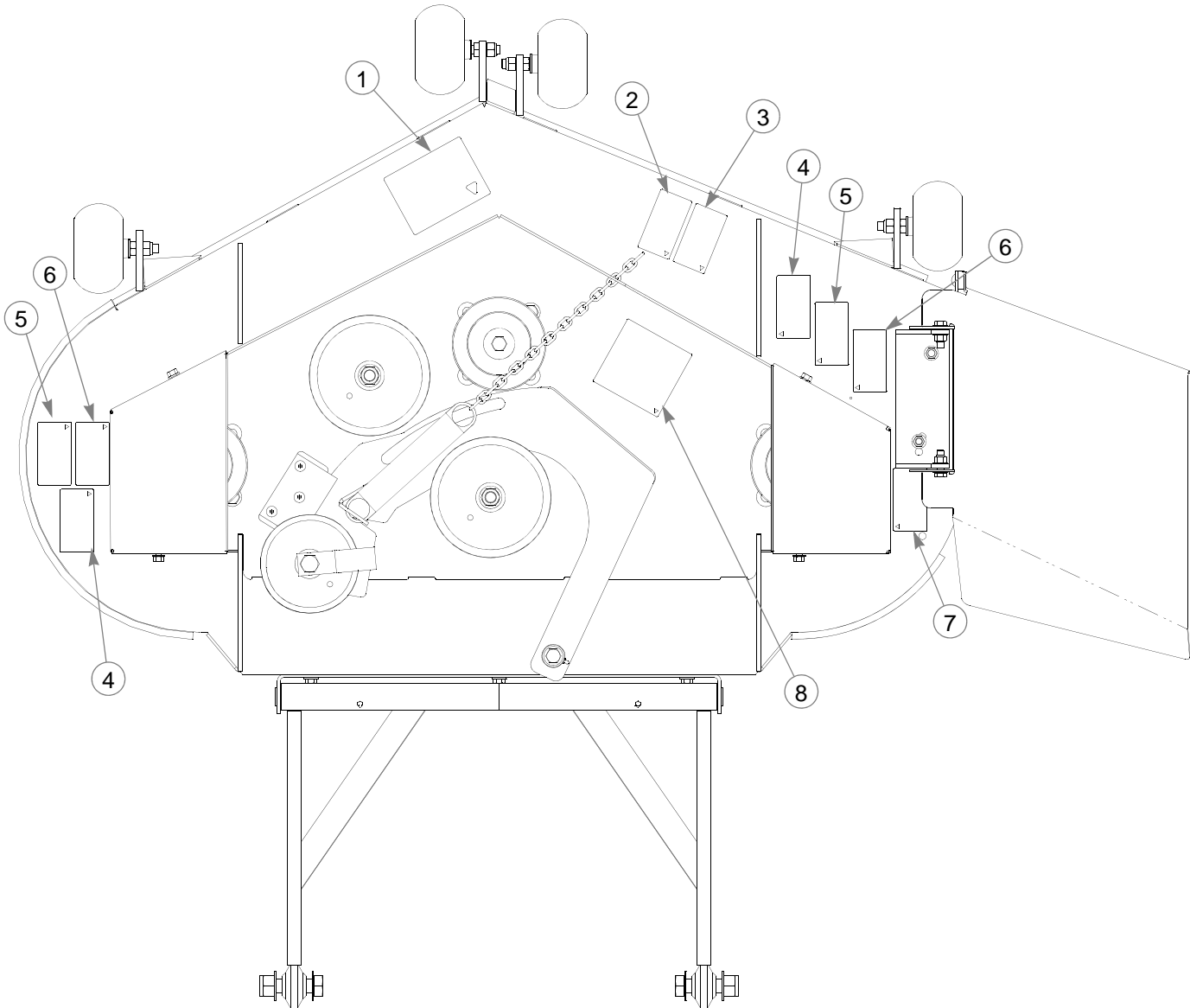
# Tractor Decals



INDEX NO.	SERVICE PART NO.	MFG. PART NO.	QTY.	DESCRIPTION
1	727008CE	727008CE	1	HYDRAULIC FLUID DECAL - CE
2	779280CE	779280CE	1	HOT DECAL - CE
3	781427CE	781427CE	1	DECK HEIGHT INDICATOR DECAL
4	784702CE	784702CE	1	INSTRUMENT PANEL DECAL - CE
5	791830	791830	1	FUEL INDICATOR DECAL
6	789727CE	789727CE	1	EYE/EAR/FOOT PROTECTION DECAL
7	777029CE	777029CE	1	MAXIMUM ANGLE CE DECAL
8	789719CE	789719CE	1	READ SERVICE MANUAL DECAL - CE
9	789701CE	789701CE	1	READ OWNER'S MANUAL DECAL - CE
10	727016CE	727016CE	1	BATTERY DECAL - CE
11	789776CE	789776CE	1	DBA DECAL - CE
12	N/A	083279	1	TURF PROD SERIAL NO PLATE
13	776310	776310	1	CE MARK DECAL
14	793588	793588	1	HUSTLER NAME PLATE
15	786426	786426	1	HUSTLER Z ID DECAL
16	771436CE	771436CE	1	STABILIZER ROLLERS DECAL - CE

## NOTES:

# 52" Deck Decals



INDEX NO.	SERVICE PART NO.	MFG. PART NO.	QTY.	DESCRIPTION
1	785535	785535	1	52" SIDE DISCHARGE DECK ID DECAL
2	789719CE	789719CE	1	READ SERVICE MANUAL DECAL - CE
3	789701CE	789701CE	1	READ OWNER'S MANUAL DECAL - CE
4	727453CE	727453CE	2	DECK COVER DECAL - CE
5	727438CE	727438CE	2	FINGERS AND TOES DECAL - CE
6	789685CE	789685CE	2	THROWN OBJECT DECAL
7	727420CE	727420CE	1	DISCHARGE CHUTE DECAL - CE
8	781419CE	781419CE	1	Z DECK BELT ROUTING DECAL - CE

## NOTES:



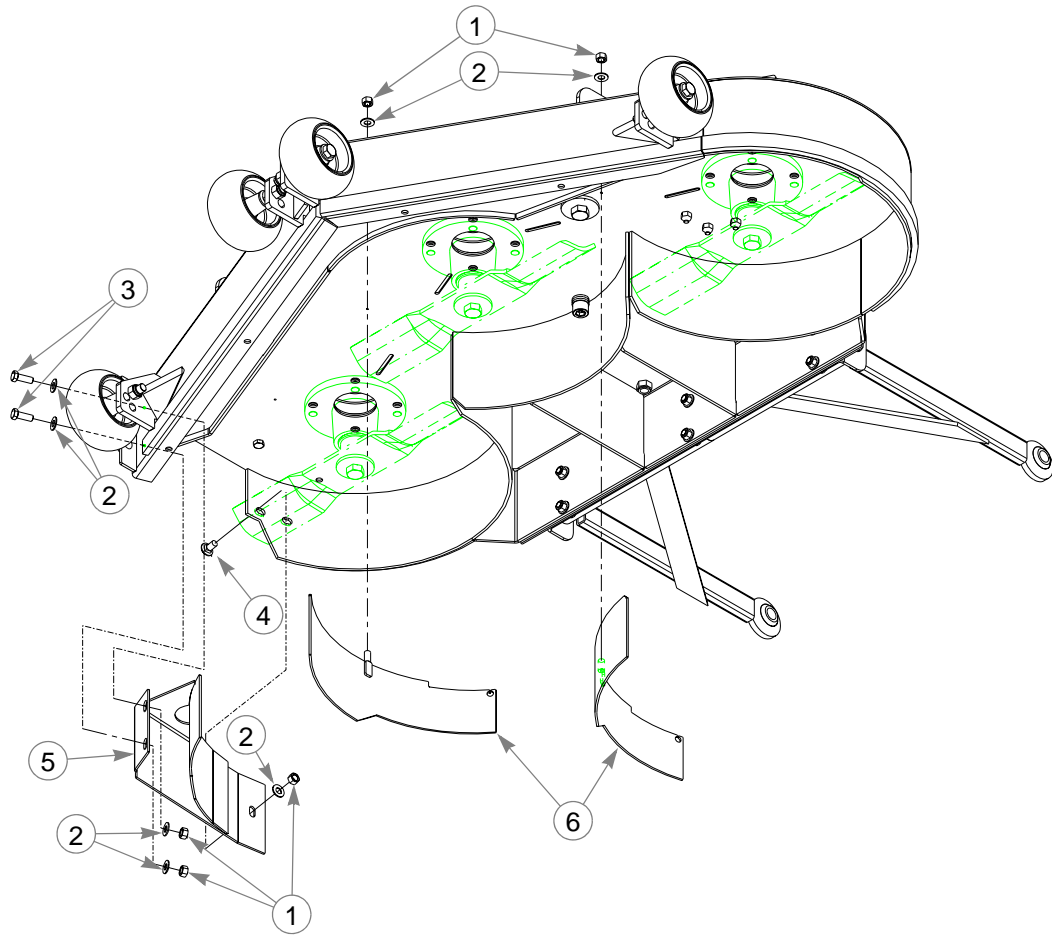
---

## Chapter 10 Contents

Mulch Kit - 344929 .....	10-2
Mulch Kit-352435 .....	10-3

# Mulch Kit-344929

1



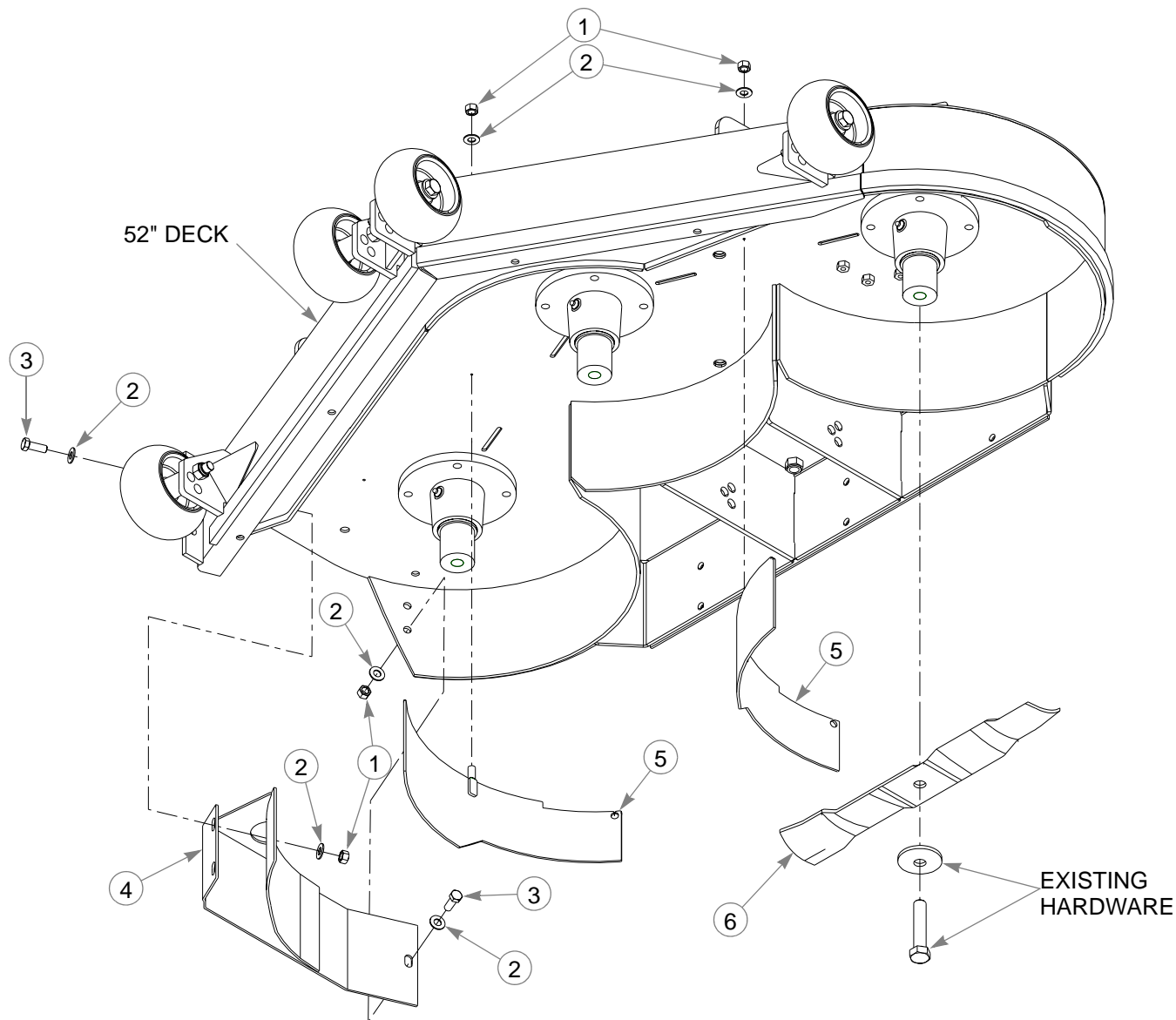
INDEX NO.	SERVICE PART NO.	MFG. PART NO.	QTY.	DESCRIPTION
1	054502	054502	5	NT .375-16 HX GRD 5 ZN
2	767954	767954	7	FW .406 X .812 X .060 SAE HD ZN
3	036244	036244	2	CS .375-16 X 1.00 HX G5 ZN
4	011320	011320	1	CB .375-16 X .750 STD ZN
5	344796	344796	1	RIGHT MULCH BAFFLE
6	344945	344945	2	COMMON MULCH BAFFLE,

## NOTES:

1. Used on mowers with serial number prior to 05011098.

# Mulch Kit-352435

1



INDEX NO.	SERVICE PART NO.	MFG. PART NO.	QTY.	DESCRIPTION
1	054502	054502	5	NT .375-16 HX GRD 5 ZN
2	767954	767954	8	FW .406 X .812 X.060 SAE HD ZN
3	036244	036244	3	CS .375-16 X 1.00 HX G5 ZN
4	100446	100446	1	RIGHT MULCH BAFFLE
5	344945	344945	2	72" COMMON MULCH BAFFLE
6	794198	794198	3	BLADE,17.86"-MUL-F-CW

## NOTES:

1. Used on mowers with serial number 05011098 and later.

---

---

---

# Part Number Index

Part No.	Page No.	Part No.	Page No.	Part No.	Page No.
<b>Index</b>					
<b>Part Numbers</b>					
000323	5-7, 5-9	055822	4-7, 5-7, 5-9	348888	4-7
000331	5-7, 5-9, 8-7	055939	4-3, 4-11	348946	4-7
000398	5-9	055947	3-3, 5-3, 5-11	348987	4-7
005116	4-7	057661	5-3	349266	6-3
008193	4-11	058776	4-3	349308	5-11
008573	7-5	059832	4-7, 5-11	349498	7-5
011320	10-2	061077	6-6	349704	5-3
012005	7-7, 7-8	061101	4-11, 6-3, 8-3	349761	4-11
015495	4-5, 4-11, 7-3, 7-5	063198	4-7	349803	7-3
015511	6-4, 6-5	064006	5-3	349860	3-3
015818	5-7, 5-9	064337	4-7	349944	5-7, 5-9
016527	4-11, 5-3, 5-7, 5-9, 7-5	065516	4-7	350041	8-7
016972	7-5	068239	6-7	350264	4-7
017004	5-3	068478	1-1	350272	4-7
019521	6-4, 6-6	068551	4-7	350330	4-7
024927	4-3, 4-11, 5-3	070037	7-5	350371	5-3
025296	4-11, 6-3, 8-3	072272	7-7, 7-8	350397	4-7
026237	5-11	077123	7-7, 7-8	350421	8-7
027912	1-1, 3-3	078386	7-5	350462	8-7
027920	1-1	080358	8-7	350561	7-5
028118	4-11, 7-5	083022	5-11	350595K	7-5
029868	4-3	083196	4-11	359547	2-3
029876	4-3, 5-3	083279	9-3	360693	5-3
029934	7-5	086660	2-3, 4-7, 7-3, 8-7	362392	4-11
030817	5-3	100446	10-3	366443	5-3
031997	6-7, 7-3	102707	5-11	366765	4-11
032763	3-3	212076	4-11	366823	4-11
032771	3-3	212472	7-5	367557	4-7
034272	3-3, 4-3, 4-5, 4-7, 4-11, 5-3, 8-7	305615	2-3	373191	7-5
034280	4-3, 7-5	317073	7-3	375527	1-1
034843	7-7, 7-8	325308	4-11	387035	6-3
036236	4-7, 4-11, 5-3	344267	6-3	395533	2-3
036244	4-7, 4-11, 5-7, 5-9, 7-3, 8-7, 10-2, 10-3	344796	10-2	545343	7-3
039677	6-4, 6-5	344929	10-2	545350	2-2
041152	4-7	344945	10-2, 10-3	704163	4-7
041475	6-3	347195	7-3	704643	4-5, 8-3
041707	3-3	347443	7-5	704742	3-3
044255	5-3	347534	2-2	704932	5-11
045088	5-7, 5-9	347898	7-5	705178	4-7
045765	6-3	347914	7-5	705186	3-3
045898	5-11	347971	7-3	705954	6-3
051169	8-3	347989	5-7, 5-9	712257	5-11
052837	5-3	348276	2-3	712976	6-3
052860	2-3, 7-3, 8-7	348284	4-5	714998	5-11
053199	4-7, 7-3	348318	4-5	720177	5-3
054502	4-7, 4-11, 7-3, 10-2, 10-3	348391	4-5	722199	8-7
055749	4-5, 8-3	348417	4-3	724716	8-7
		348458	4-5	727008CE	9-3
		348714	4-7	727016CE	9-3
		348755	4-7	727420CE	9-4
		348797	4-7	727438CE	9-4
		348862	4-7	727453CE	9-4

Part No.	Page No.	Part No.	Page No.	Part No.	Page No.
727756	3-4	781153	4-7	782995	4-5
740696	4-3	781211	4-7	783001	4-5
744276	4-3	781229	4-5	783472	8-8
745059	5-9	781260	4-7	783696	4-7
747741	6-4	781286	4-7	783738	7-5
747782	6-3	781294	4-5	783753	7-5
747832	6-4	781302	4-11, 7-5	783787	7-5
748681	4-11	781351	4-7	783829	4-11
748756	8-7	781385	7-5	783878	7-5
756270	4-5	781419CE	9-4	783894	5-3, 5-11, 5-12
762195	5-11	781427CE	9-3	784181	5-9
763318	5-4	781443	1-1, 4-11	784199	7-5
763946	3-3	781469	3-3	784223	6-3
763953	3-3	781476	3-3	784702CE	9-3
765339	4-7	781484	3-3	784918	4-11
766204	7-7, 7-8	781492	3-3	785030	5-11
767954	2-3, 4-7, 4-11, 5-7, 5-9, 7-3, 8-7, 10-2, 10-3	781500	3-3	785261	1-1, 5-4
767962	4-11, 5-3, 5-7, 5-9, 6-7, 7-3, 7-5	781518	3-3	785279	1-1
768127	4-11	781526	3-3	785295	5-7
768168	7-5	781534	3-3	785436	7-5
768333	3-3	781542	3-3	785535	9-4
768341	1-1, 3-3	781559	3-3	785659	4-11
768515	3-3, 4-7, 4-11, 5-3, 5-11	781567	6-7, 7-3	785741	5-3
768523	3-3, 4-3, 4-7, 4-11, 5-3, 7-5, 8-7	781575	3-3	785808	5-11
768820	4-3, 5-3	781583	4-7	786038	5-3
769166	5-3	781591	3-3	786426	9-3
770859	6-6	781617	8-7	786673	5-3
771428	4-3, 5-3	781658	3-3	787366	4-11
771436CE	9-3	781708	7-3	788166	7-3
772079	1-1	781716	4-7	788547	7-7
776310	9-3	781724	5-3	789537	6-3
776476	5-11	781732	5-3	789685CE	9-4
777029CE	9-3	781765	4-7	789701CE	9-3, 9-4
777656	5-3	781831	4-5	789719CE	9-3, 9-4
778217	4-11	781856	4-11, 7-5	789727CE	9-3
778365	5-11	781880	2-3, 7-3, 8-7	789776CE	9-3
778423	1-1	781898	1-1, 7-5	791251	4-11
778738	4-11	781922	4-7	791277	5-9
778985	3-3	782078	6-6	791830	9-3
779132	3-3	782086	6-6	792192	5-3
779280CE	9-3	782144	8-7	792986	5-7
779306	5-7	782151	8-7	793232	5-7
779850	4-3	782169	8-8	793240	5-7
779876	4-11	782177	8-8	793273	8-7
780841	5-3	782185	8-8	793281	8-7
781047	3-3	782284	6-6	793299	8-7
781054	3-3	782292	1-1, 7-5	793307	8-7
781062	3-3	782474	7-5	793315	8-7
781112	4-7	782532	7-5	793323	8-7
		782649	5-3	793588	9-3
		782664	5-3	793661	8-7
		782763	5-3	793695	8-7
		782771	6-4, 6-5	794198	10-3
		782979	4-7	794446	4-11, 7-5

Part No.	Page No.	Part No.	Page No.	Part No.	Page No.
795526	7-5	796524	5-3	797571	8-7
796227	7-8	797084	5-7	808485	7-3
796235	7-5	797464	8-7	808493	2-2
796318	5-9	797472	8-7		
796326	5-9	797480	8-7		